



Installation Guide

Ver. 1

How to Install ICC profile for Sublimation Printing on CorelDRAW

Splashjet Print Technologies

Address: Nagpur City, India.

Phone: +91-7391-066-702

Email: info@splashjet-ink.com

Introduction:

This instruction manual will guide you on how to use ICC profile with Splashjet sublimation inks [SPLASHJET INK CODE HERE]. Use of the color profile and settings described here will ensure accurate color reproduction for your sublimation transfer prints.

Please note that even with ICC profile settings, the results depend on the Sublimation Paper, Heat Transfer Machine & Target Substrate. Results may vary from the soft copy depending upon the variables above.

For best quality sublimation transfers :

- ◆ Always use Good Quality Sublimation Papers.
- ◆ Use recommended Print Settings for Printing.
- ◆ Use Right Transfer Temperature and Time suitable for Substrate.
- ◆ Use High Resolution Images in RGB Color format.

Let’s understand how to use Color Profile with Splashjet Sublimation inks. If you don’t have the ICC profile with you, please register at the link below [LINK HERE] or contact our sales representative now.

Installation of ICC Profile :

Before installation of ICC profile, you need to save the .icc profile file at local drive & follow the following steps.

Step 1 : Right click on profile “Epson_L130_Suq_V800_R2” and Click on install profile, as shown in fig.1

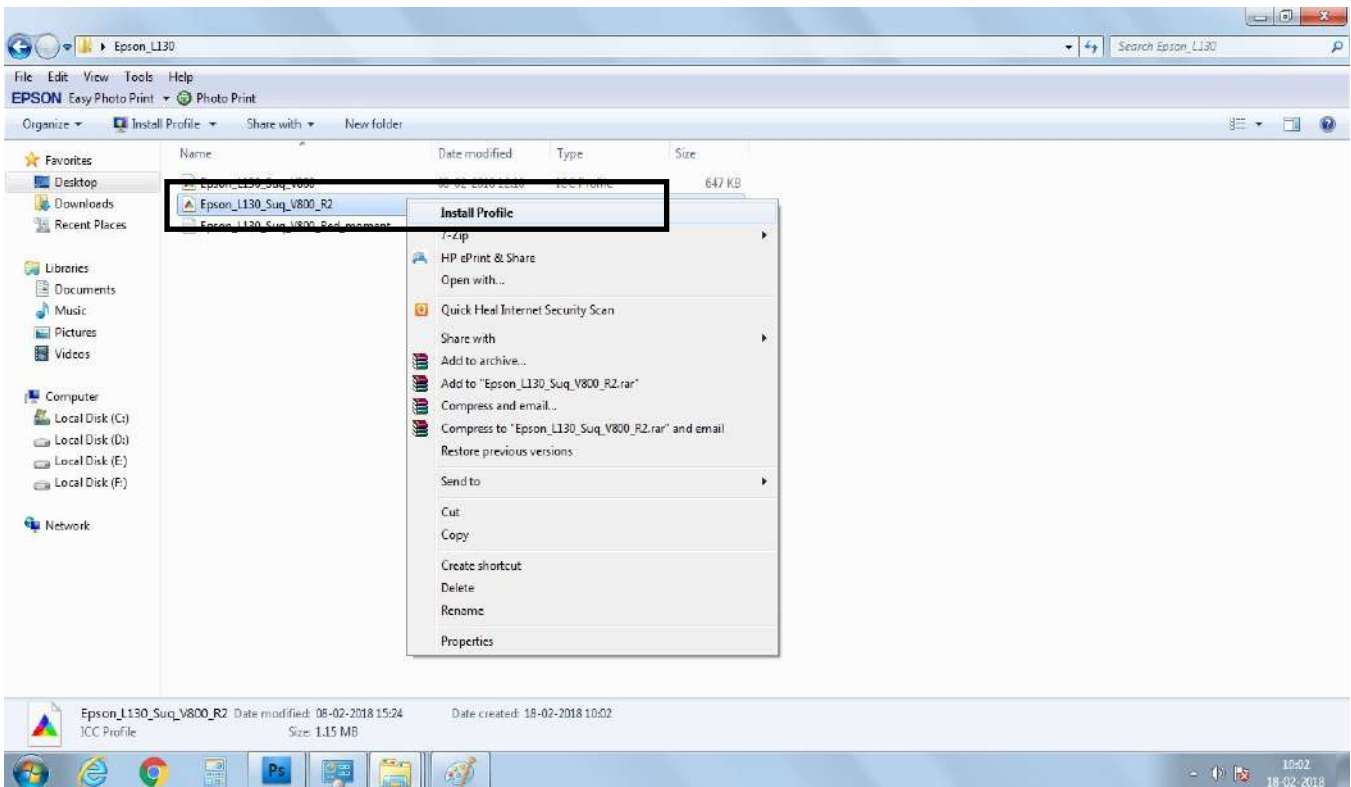


Fig. 1

Step 2: Open Coral Software, Click on File Tab and Open image you want to print, as shown in fig. 2

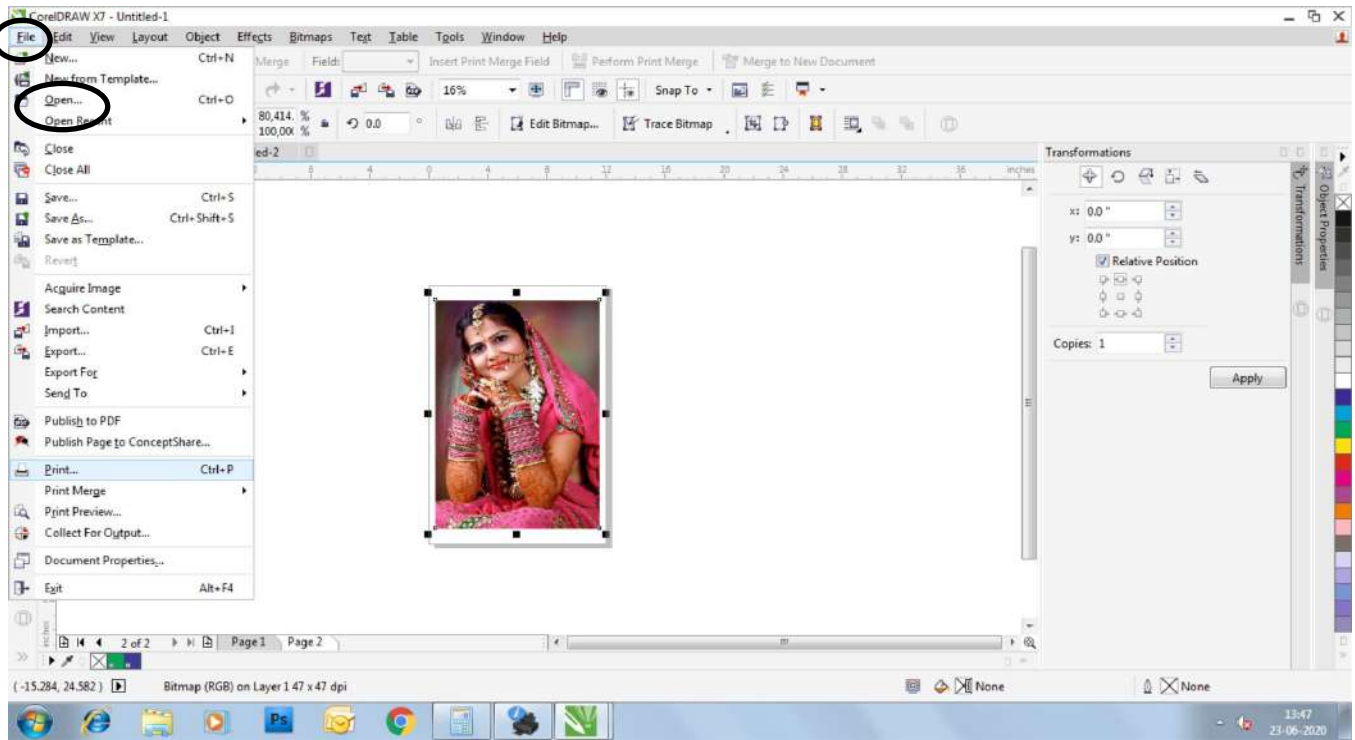


Fig. 2

Step 3: In Coral, Click on Bitmaps Tab, go to Mode and select RGB color as shown in fig. 3

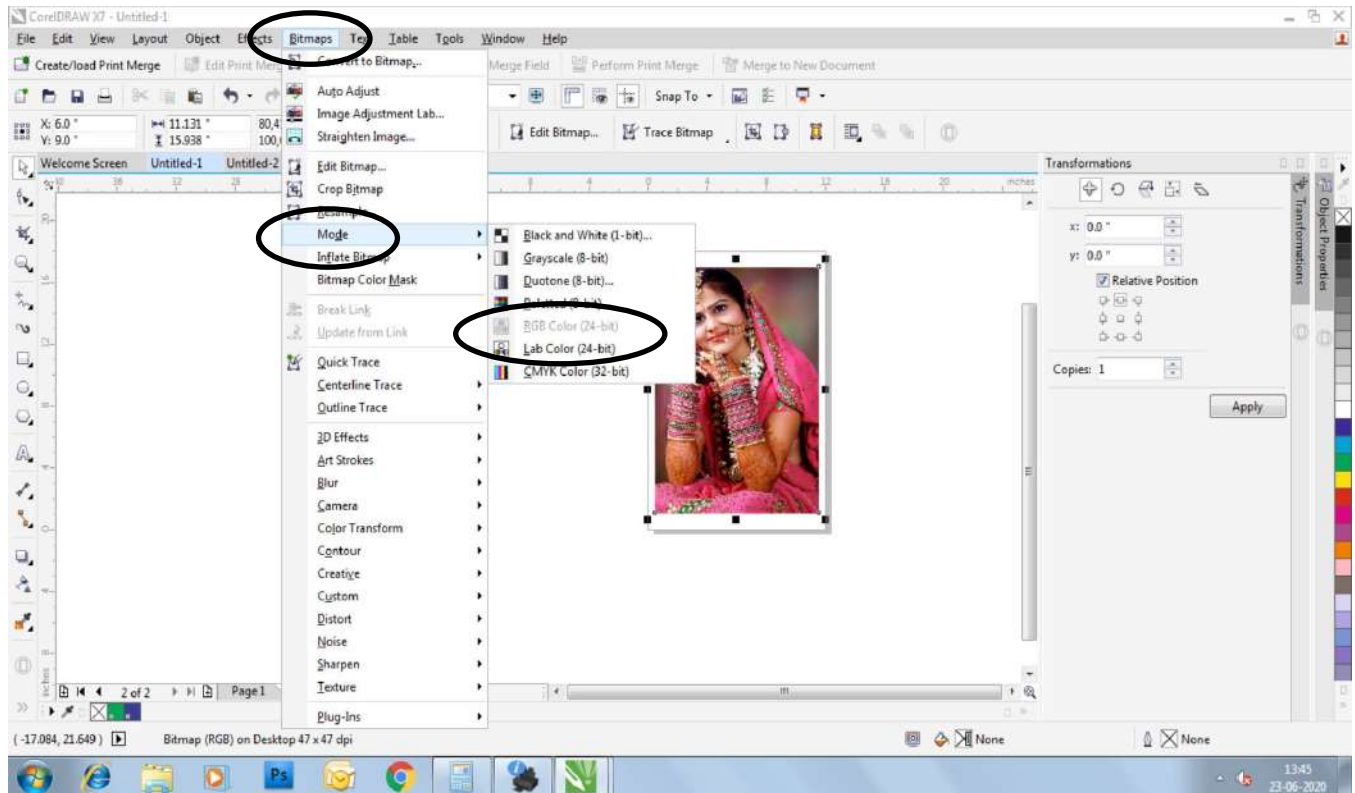


Fig. 3

Step 4: Click on File Tab & Select Print option as shown in fig. 4

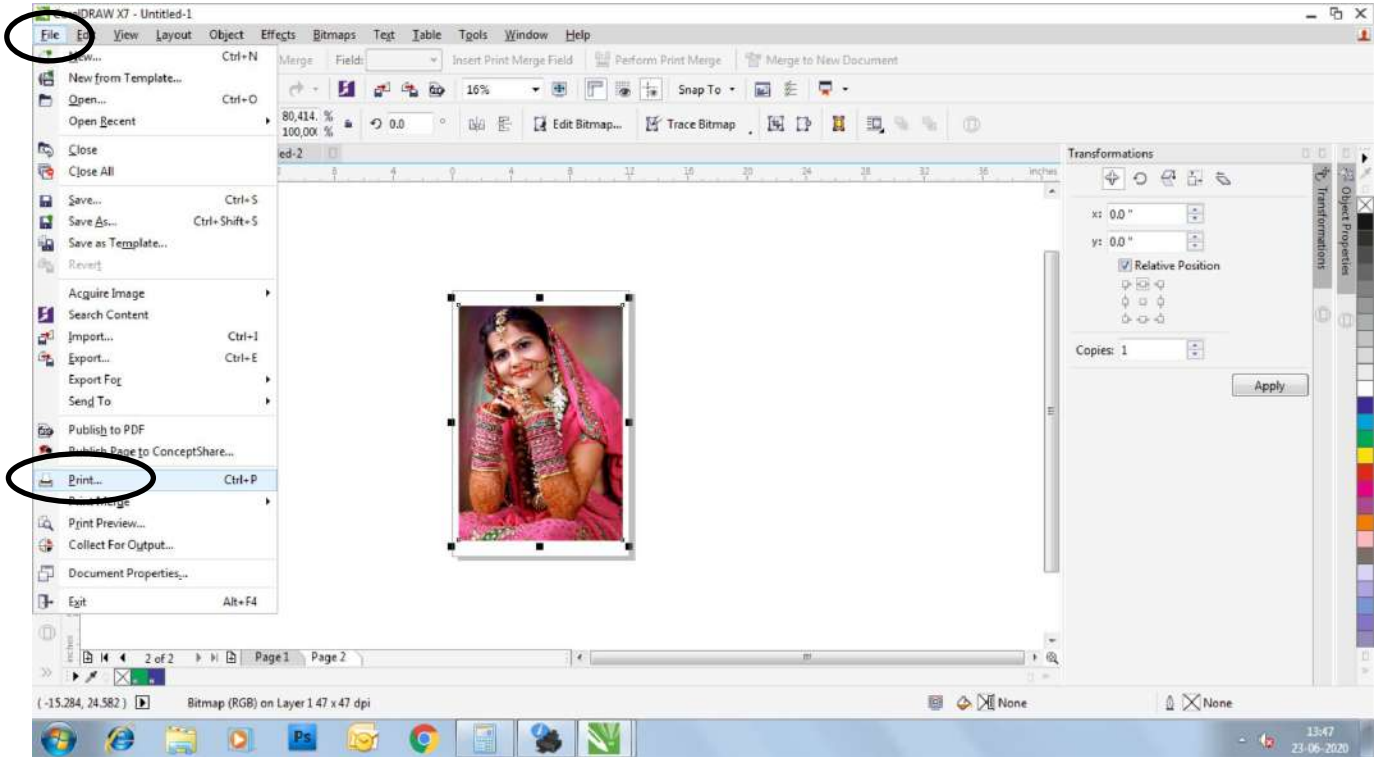


Fig. 4

Step 5: On the Print window, go to Color Section as shown fig. 5

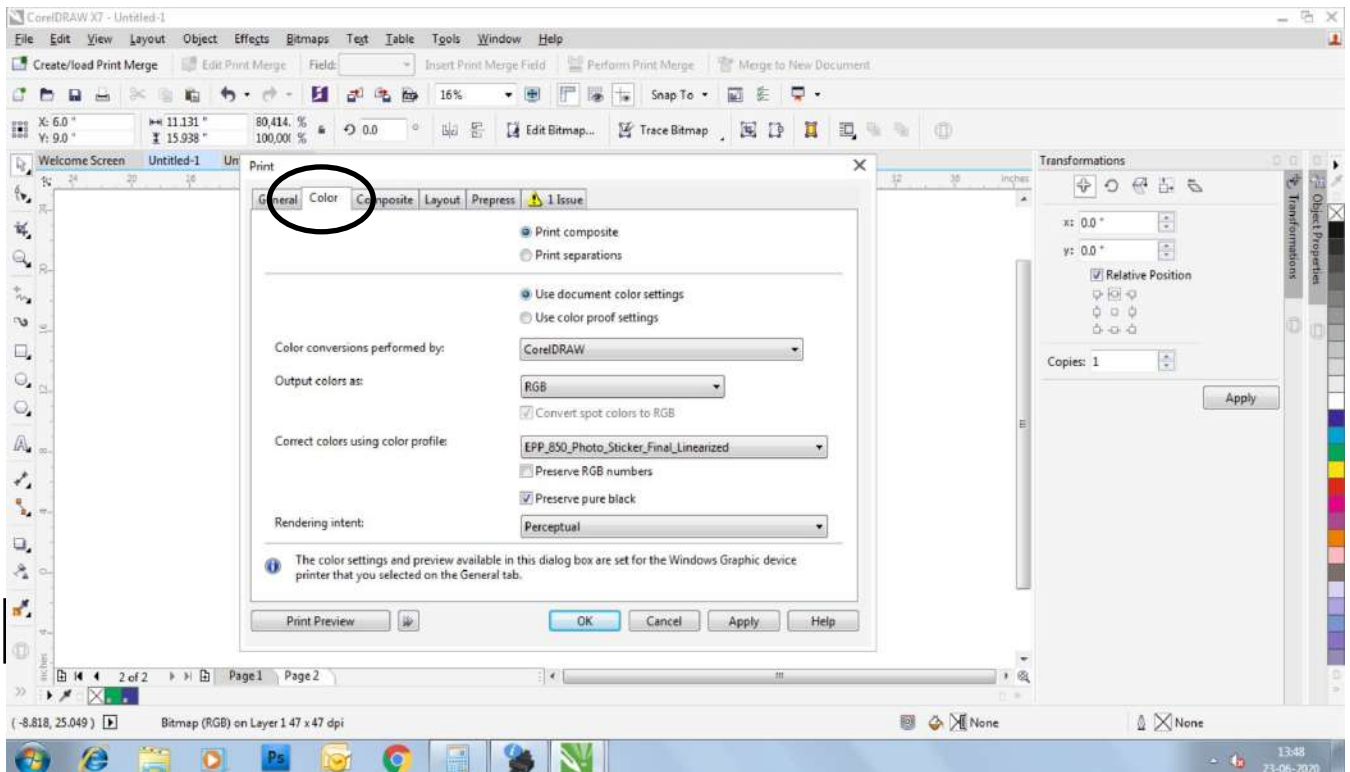


Fig. 5

Step 6: In Color Section, Select

- Output color as: RGB
- Correct color using color profile section: Select the Installed ICC profile
- Rendering intent: Perceptual & click OK as shown in fig. 6

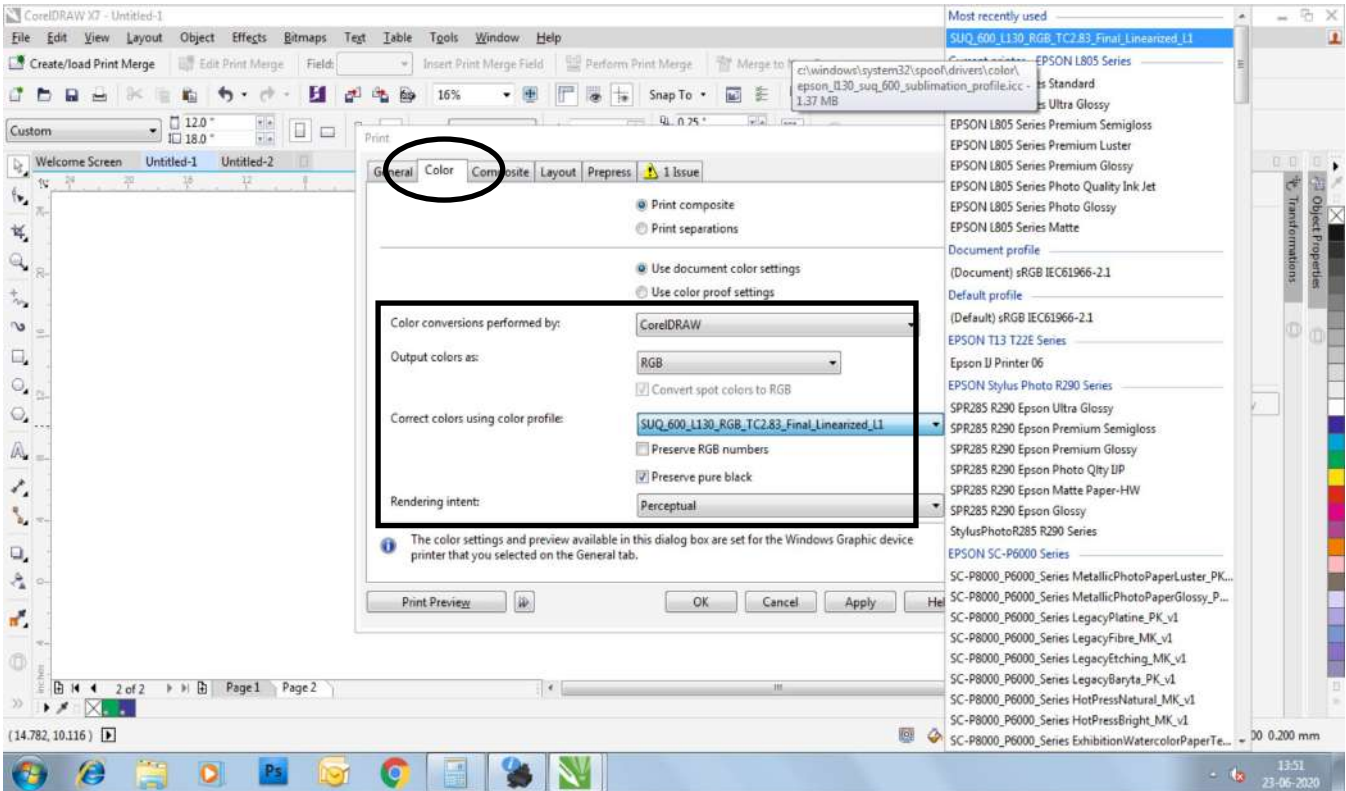


Fig. 6

Step 7: Now on the same Print window go to General Section as shown in fig. 7

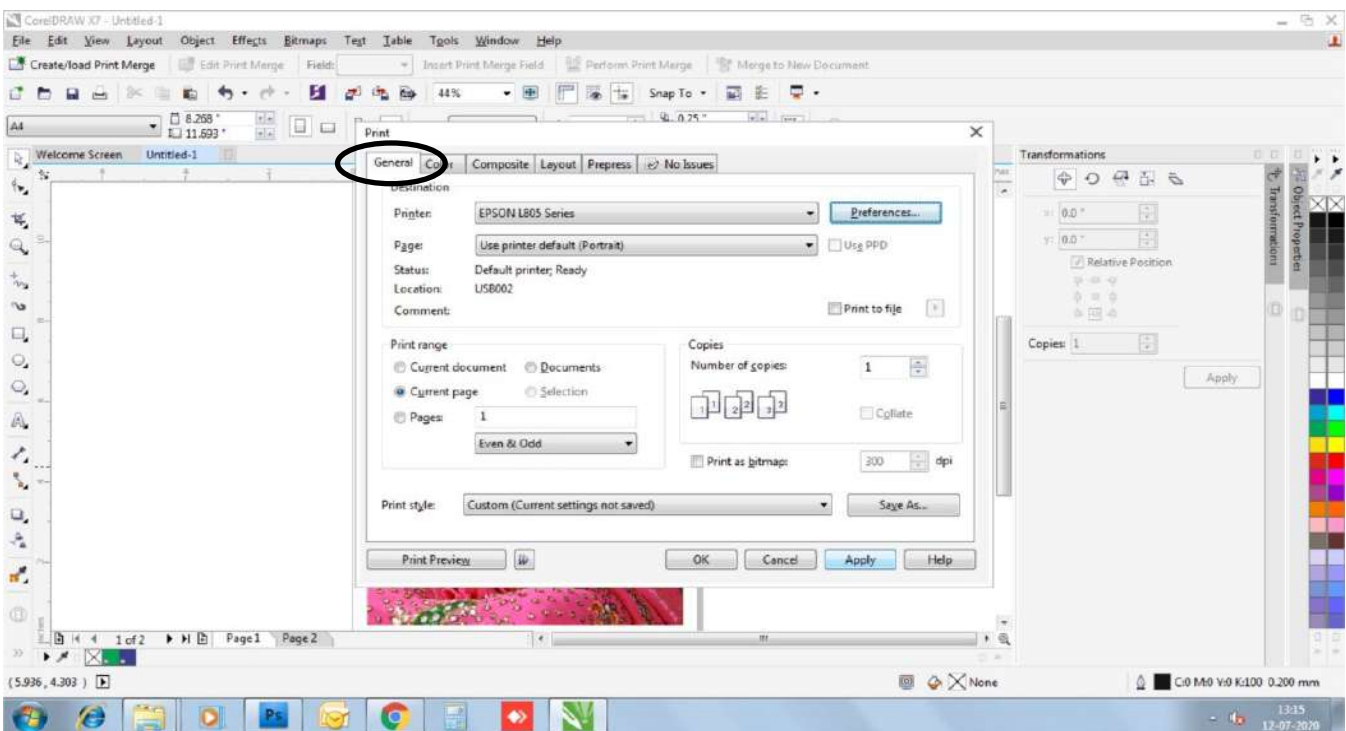


Fig. 7

Step 8: In General Section click on Preference Tab, a new window will pop up as shown in fig. 8

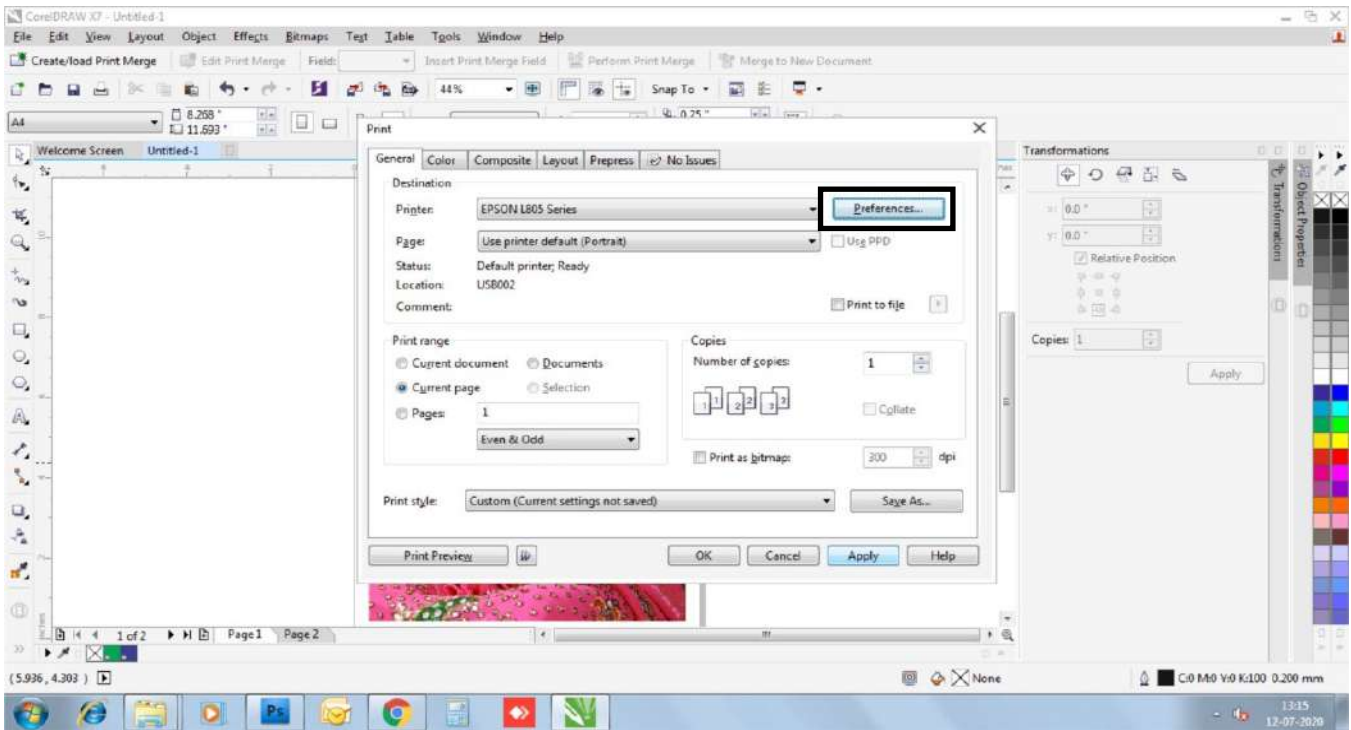


Fig. 8

Step 9: In Preference “Main” section select

- a) Document Size - as your paper size to print.
- b) Orientation - Portrait or Landscape.
- c) Paper Type: Epson Matte.
- d) Quality: High.
- e) & Color button to be checked as shown in fig. 9

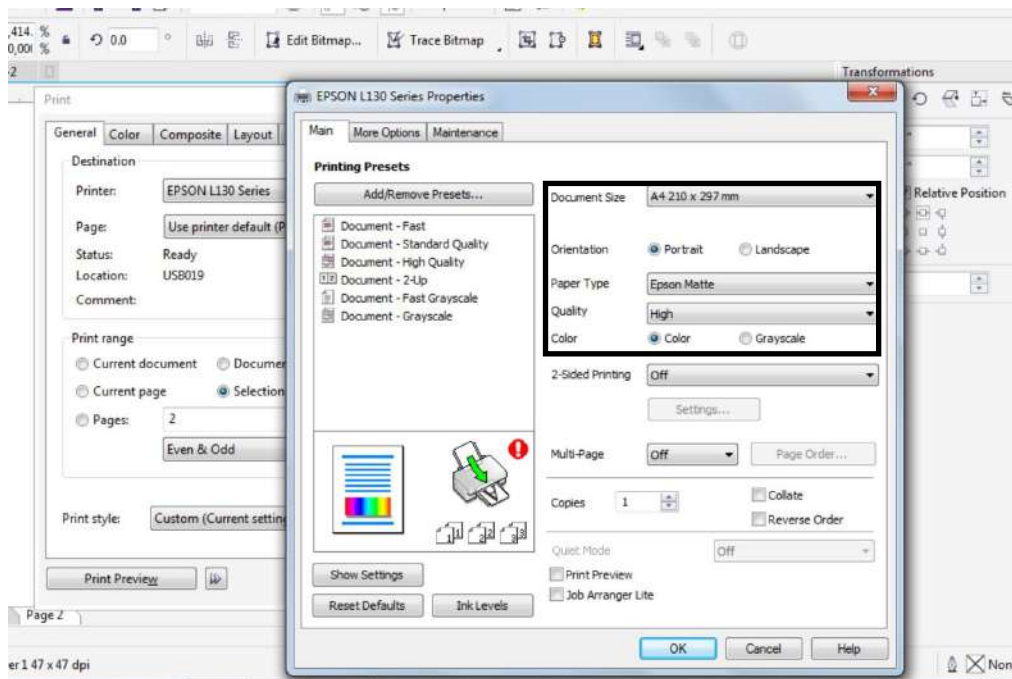


Fig. 9

Step 10: In Preference “More Options” section

- In Additional Settings – “High Speed” check box should be “unchecked” and “Mirror Image” check box has to be “checked”
- Color Correction – Select custom
- Click on “Advanced” tab a new window will pop up as shown in fig. 10

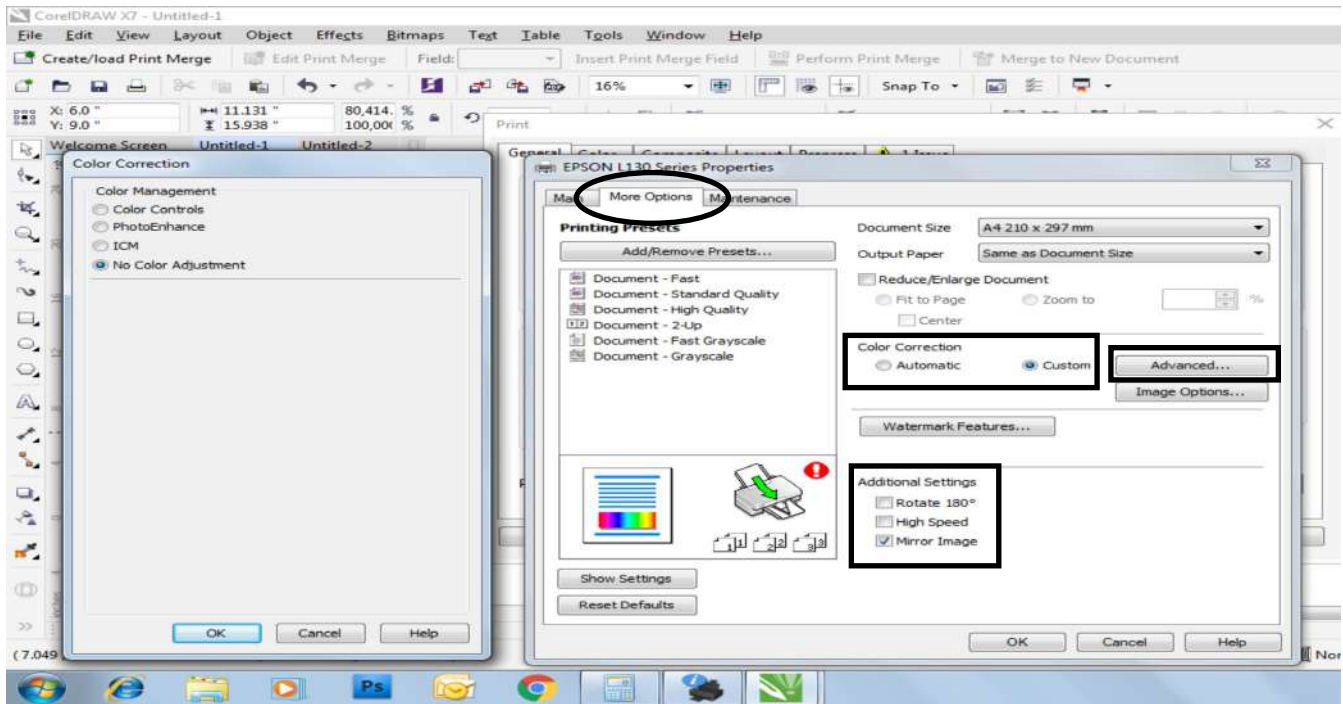


Fig. 10

Step 11: In Color Correction tab select “No Color Adjustment” & click ok as shown in fig. 11

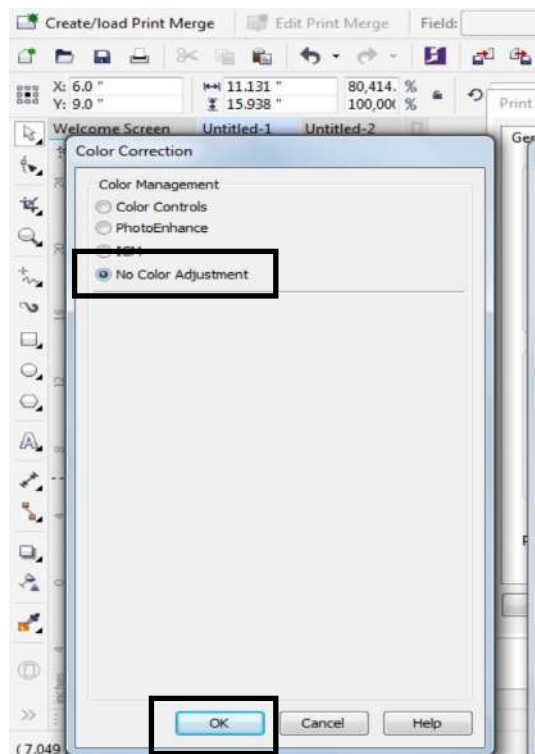


Fig. 11

Step 12: In Same “More Options” section click “Image option” tab a new window will pop up.

- Select the checkbox for “Edge Smoothing” as shown in fig. 12 and click on “OK”

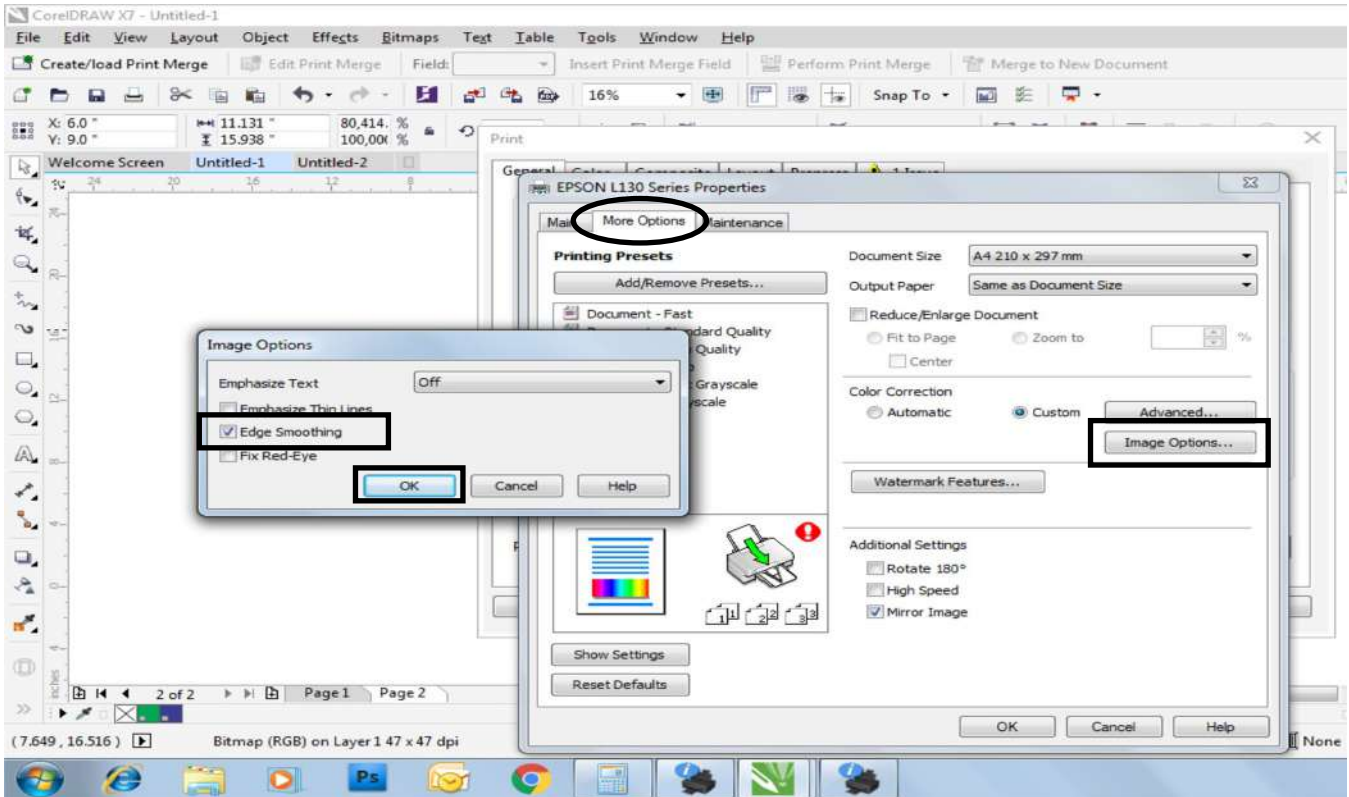


Fig. 12

Step 13: Now Click on “Apply” Tab as shown in fig. 13

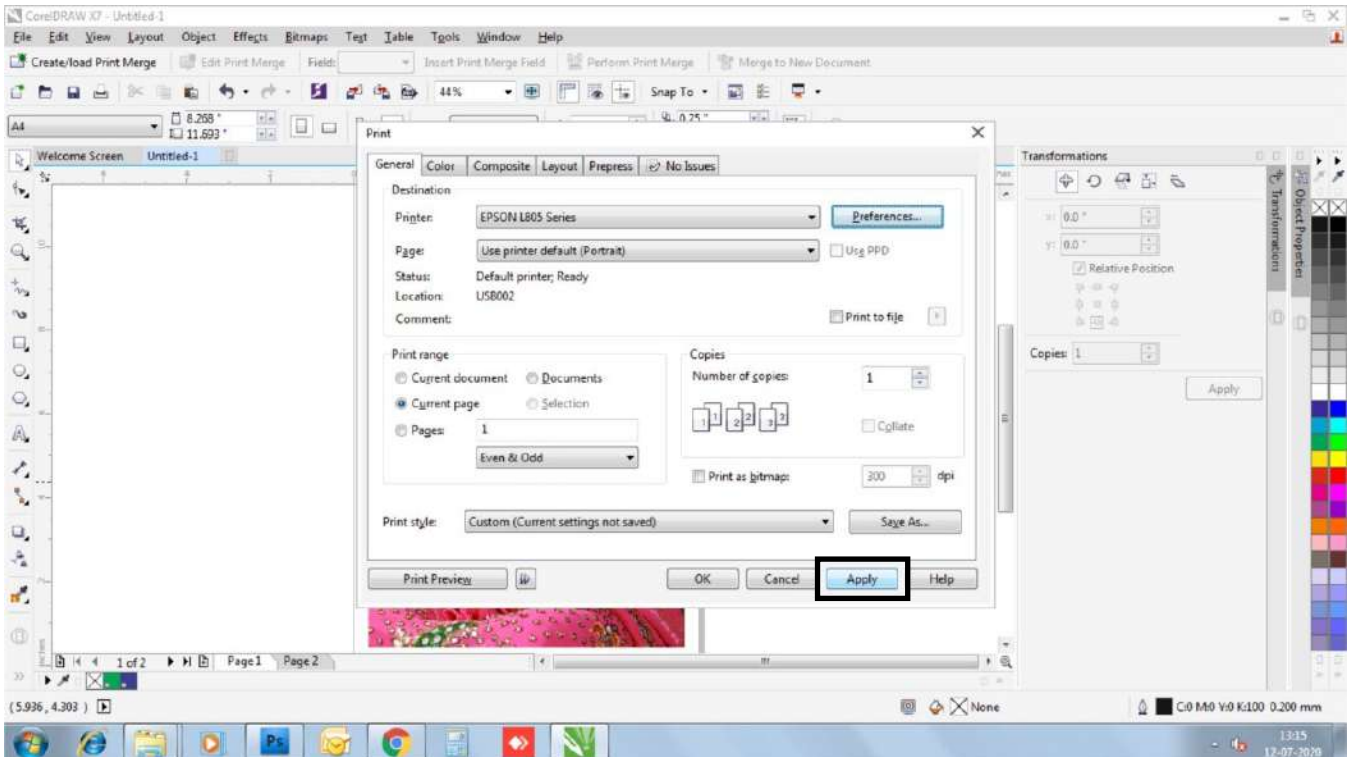


Fig. 13

Step 14: On the same General section click on “Print Preview” Tab as shown in fig. 14

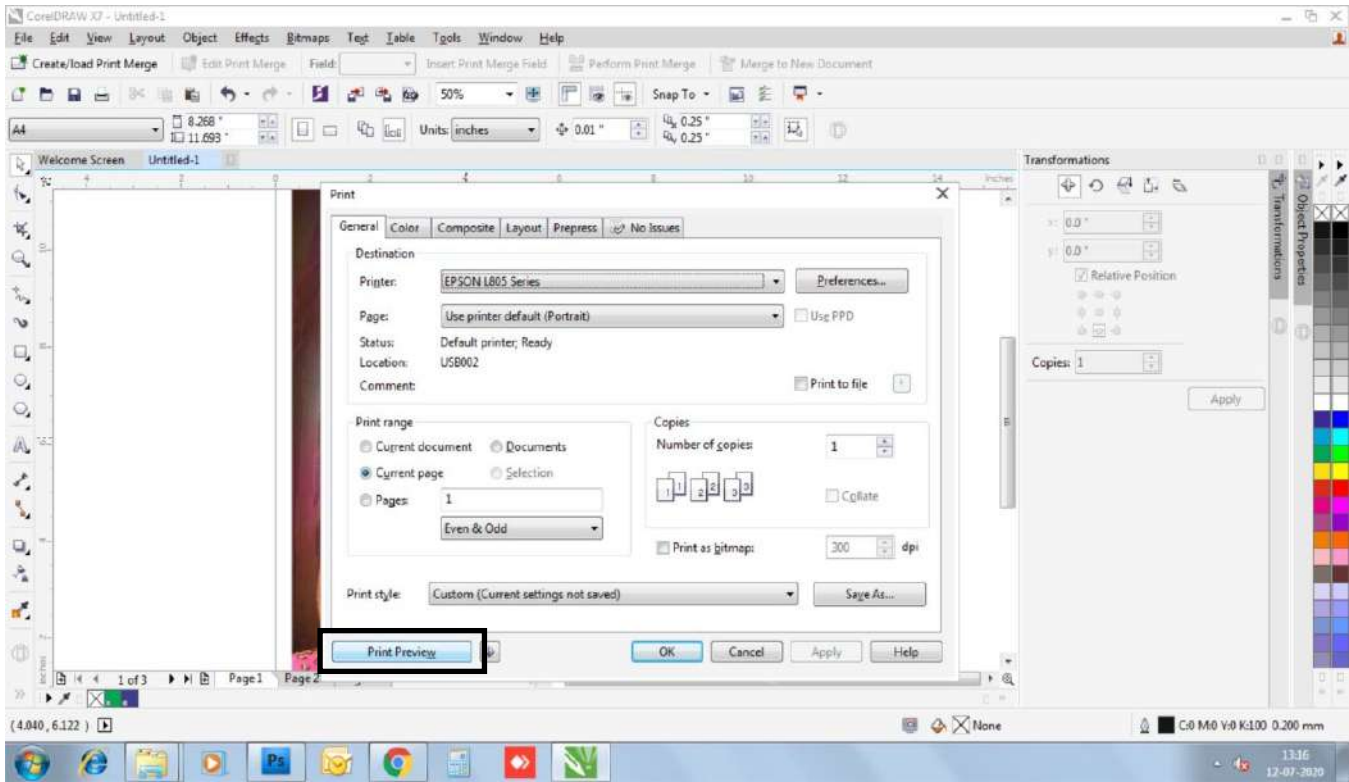


Fig. 14

Step 15: Now on the Top left section, select “Center of page” option from the dropdown as shown in fig. 15

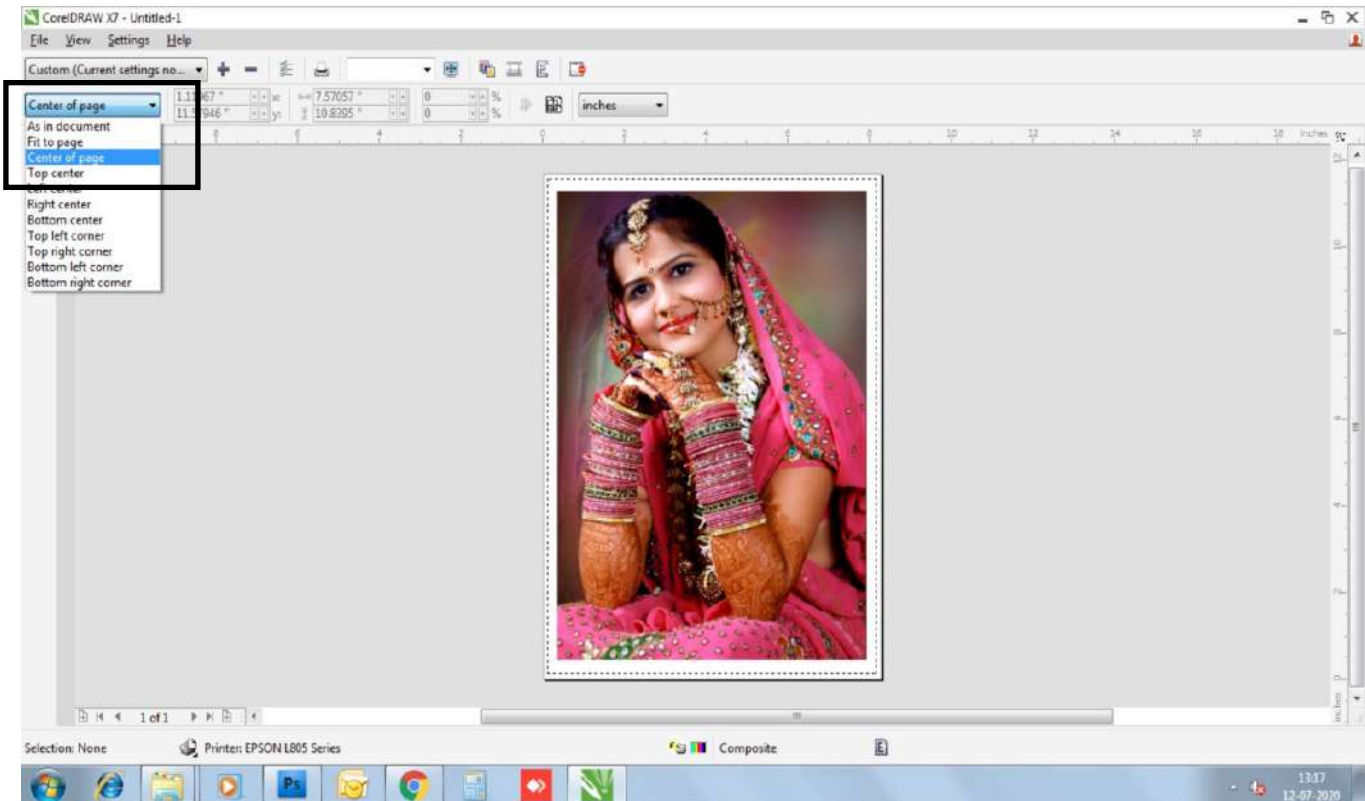


Fig. 15

Step 16: Finally click on print icon as shown in fig. 16

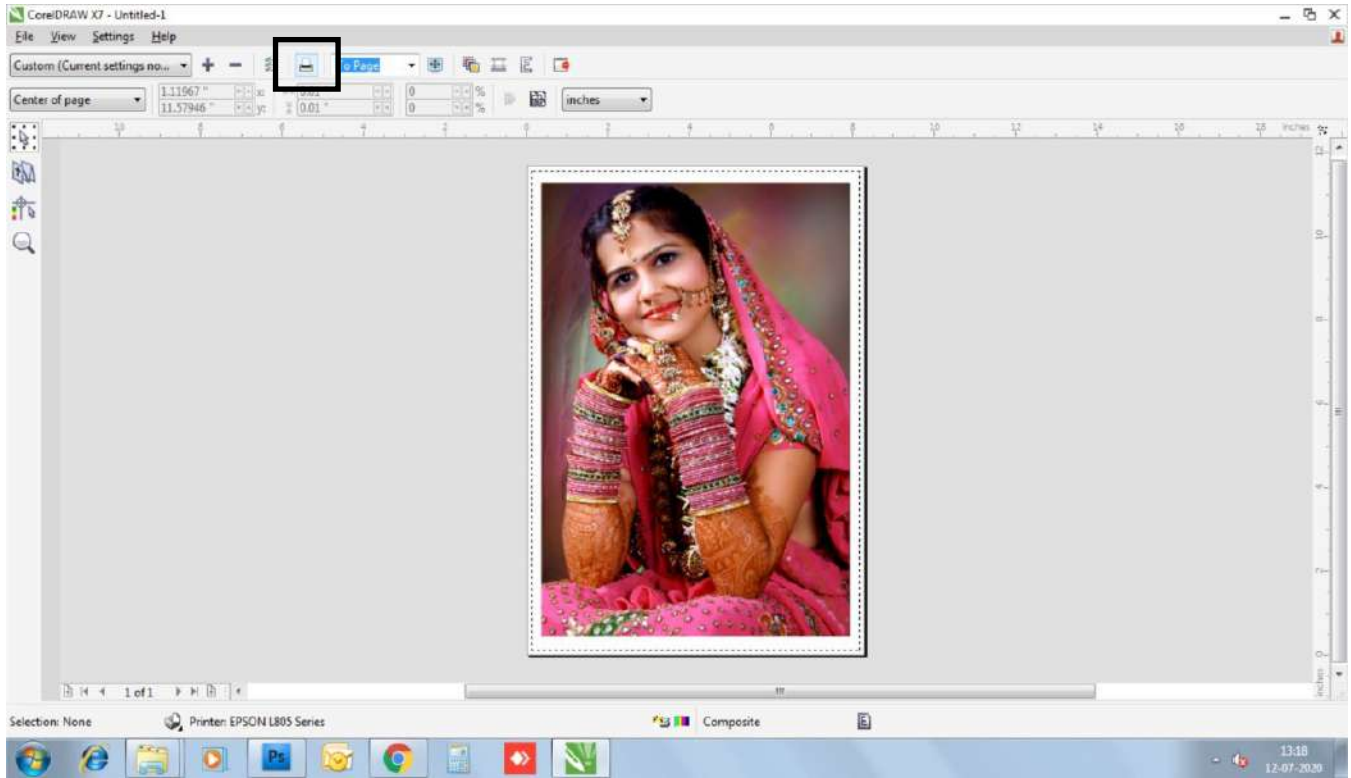


Fig. 16

Happy Printing!!!

Fig. 13