



Installation Guide

Ver. 1

How to Install ICC profile for Sublimation Printing on Adobe Photoshop

Splashjet Print Technologies

Address: Nagpur City, India.
Phone: +91-7391-066-702
Email: info@splashjet-ink.com

Introduction:

This instruction manual will guide you on how to use ICC profile with Splashjet sublimation inks [SPLASHJET INK CODE HERE]. Use of the color profile and settings described here will ensure accurate color reproduction for your sublimation transfer prints.

Please note that even with ICC profile settings, the results depend on the Sublimation Paper, Heat Transfer Machine & Target Substrate. Results may vary from the soft copy depending upon the variables above.

For best quality sublimation transfers :

- ◆ Always use Good Quality Sublimation Papers.
- ◆ Use recommended Print Settings for Printing.
- ◆ Use Right Transfer Temperature and Time suitable for Substrate.
- ◆ Use High Resolution Images in RGB Color format.

Let's understand how to use Color Profile with Splashjet Sublimation inks. If you don't have the ICC profile with you, please register at the link below [LINK HERE] or contact our sales representative now.

Installation of ICC Profile :

Before installation of ICC profile, you need to save the .icc profile file at local drive & follow the following steps.

Step 1 : Right click on profile “Epson_L130_Suq_V800_R2” and Click on install profile, as shown in fig.1

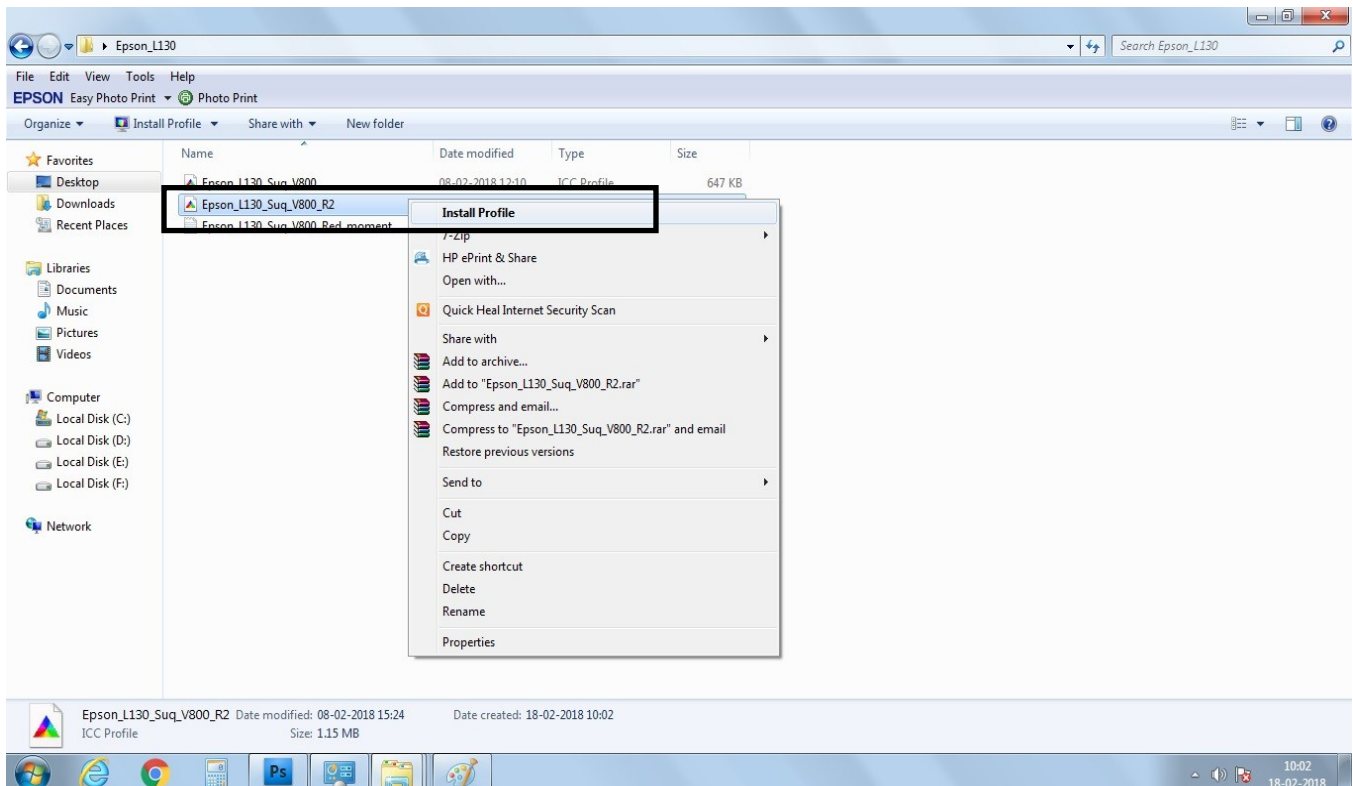


Fig. 1

Color Management of image :

Step 2: Open Photoshop software, Click on File Tab and select the image you want to print, as shown in fig. 2

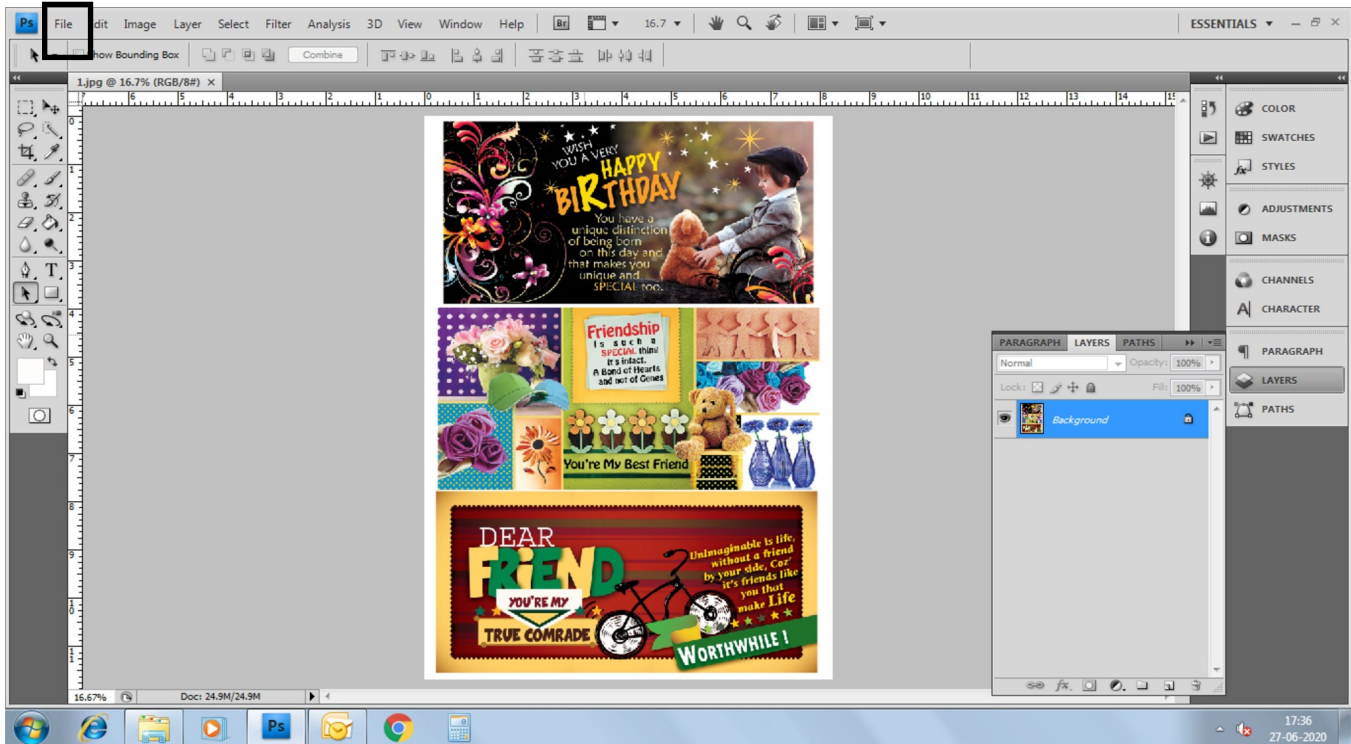


Fig. 2

Step 3: In Photoshop click on “Edit” tab & select “Assign Profile” as shown in fig. 3

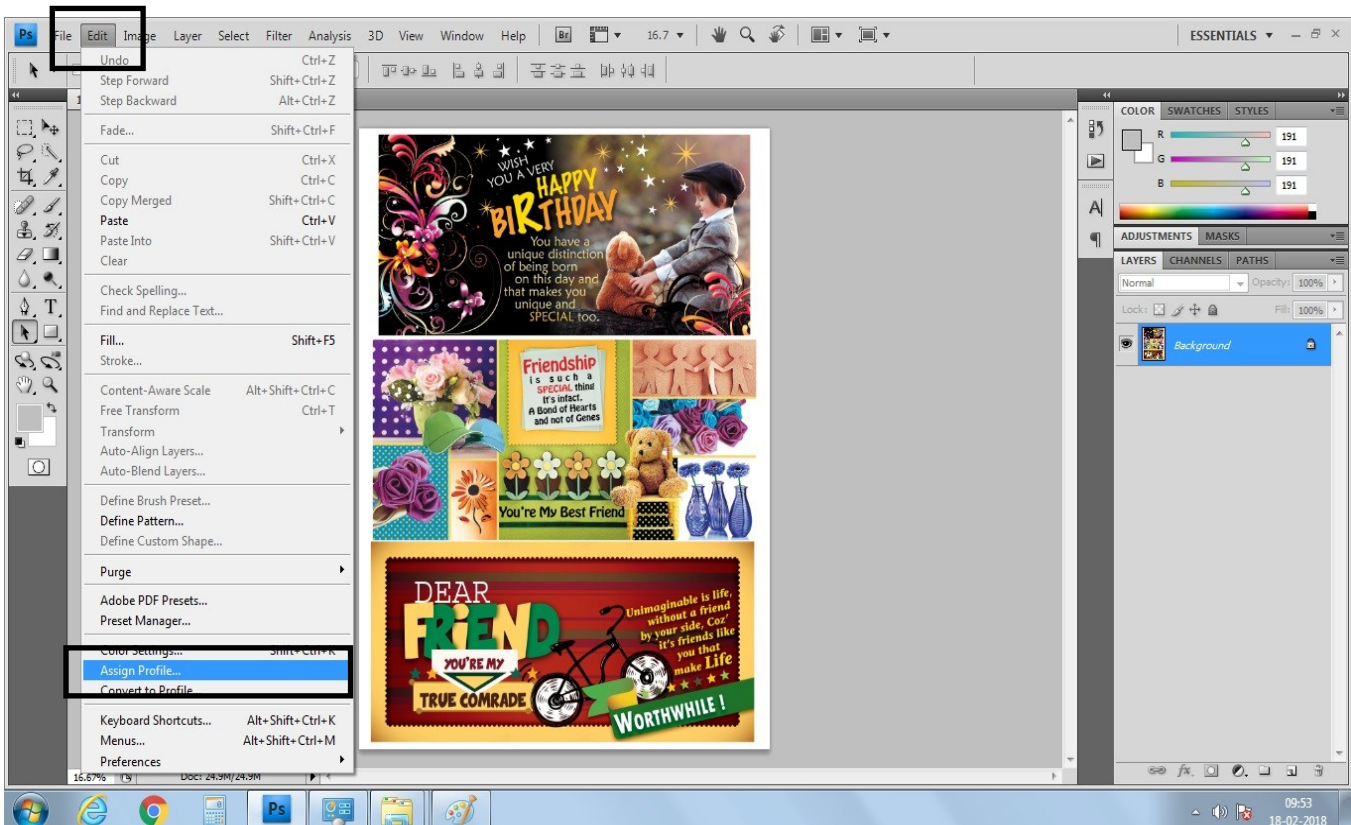


Fig. 3

Step 4: In Assign Profile tab click on “Don’t Color Manage This Document” as shown in fig.4, and click on “OK”

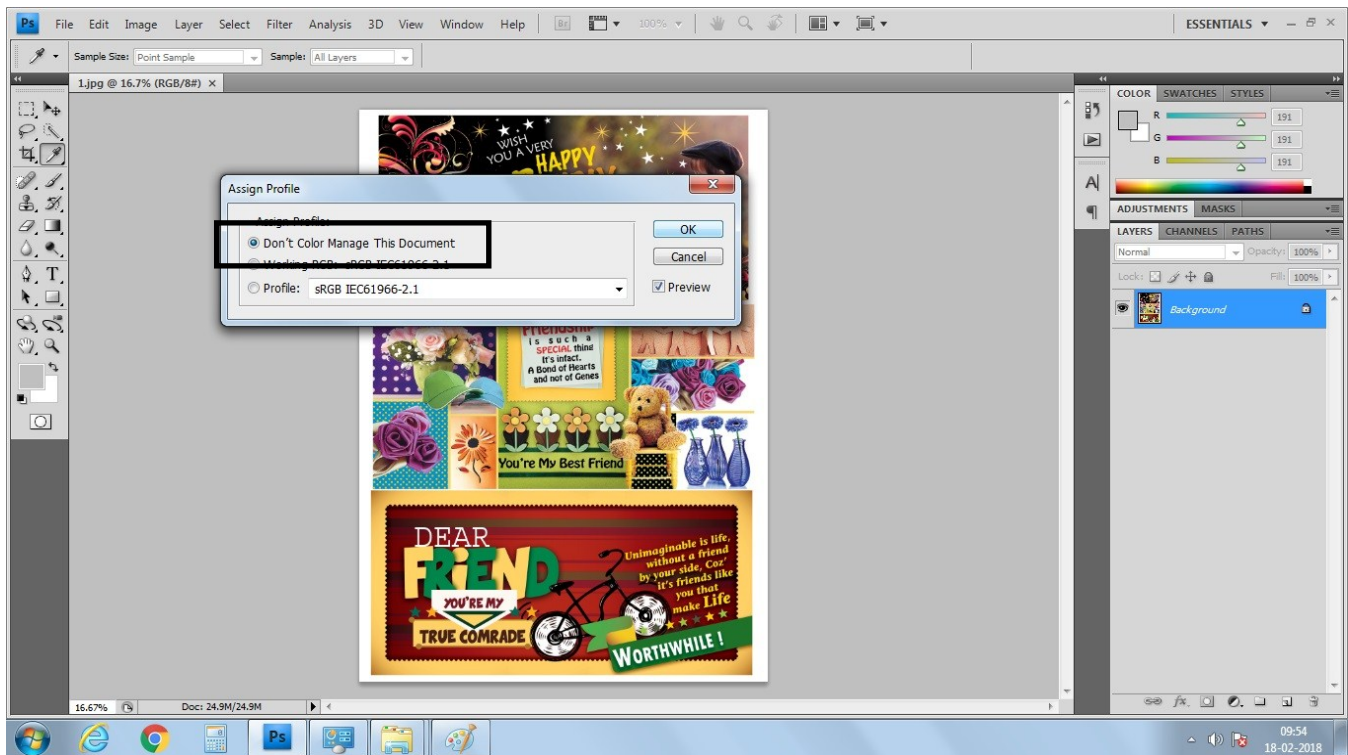


Fig. 4

Step 5: In Photoshop click on “File” tab & select “Print” as shown in fig. 5

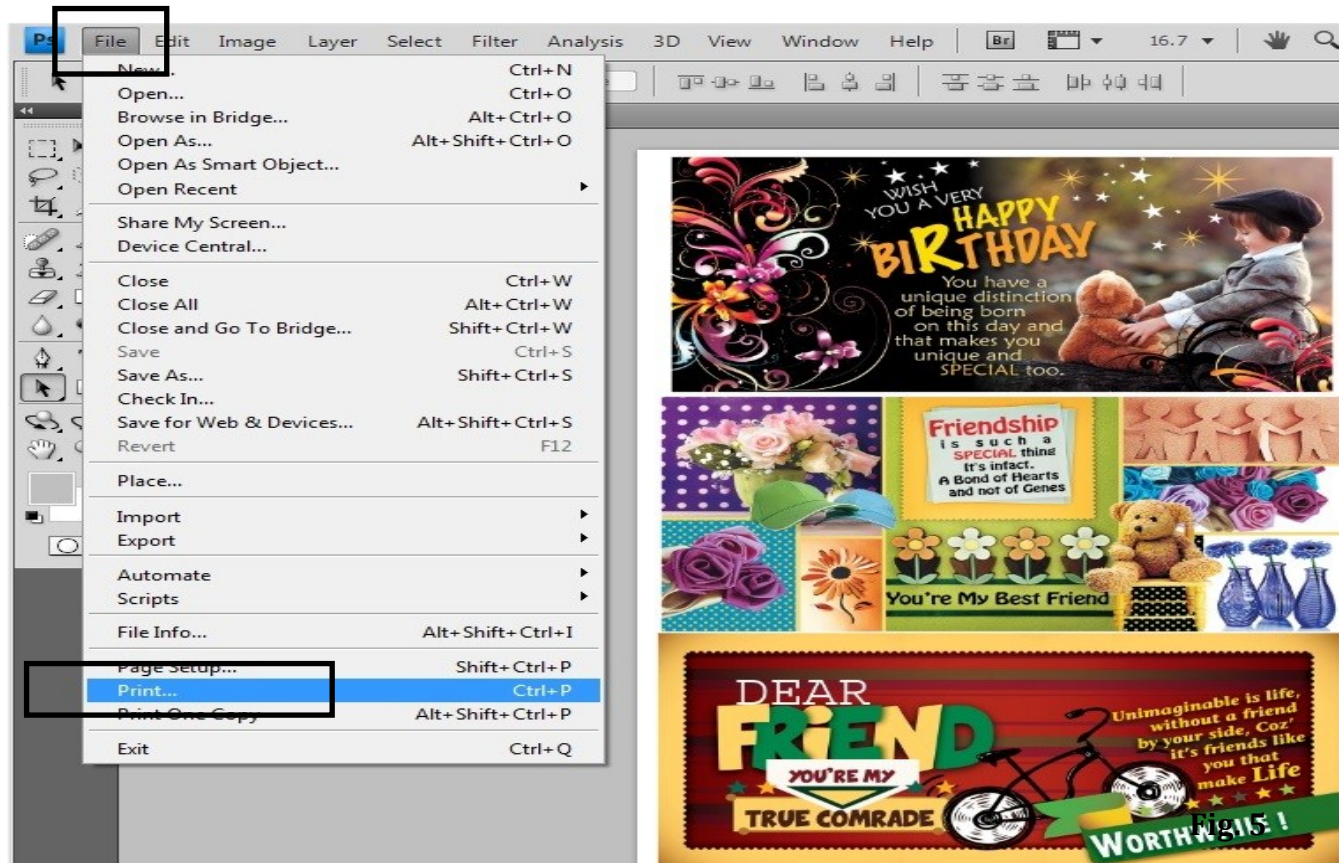


Fig. 5

Print Setting - Photoshop:-

Step 6. Select correct printer model from “Printer” drop down box as shown in fig. 6 and 7

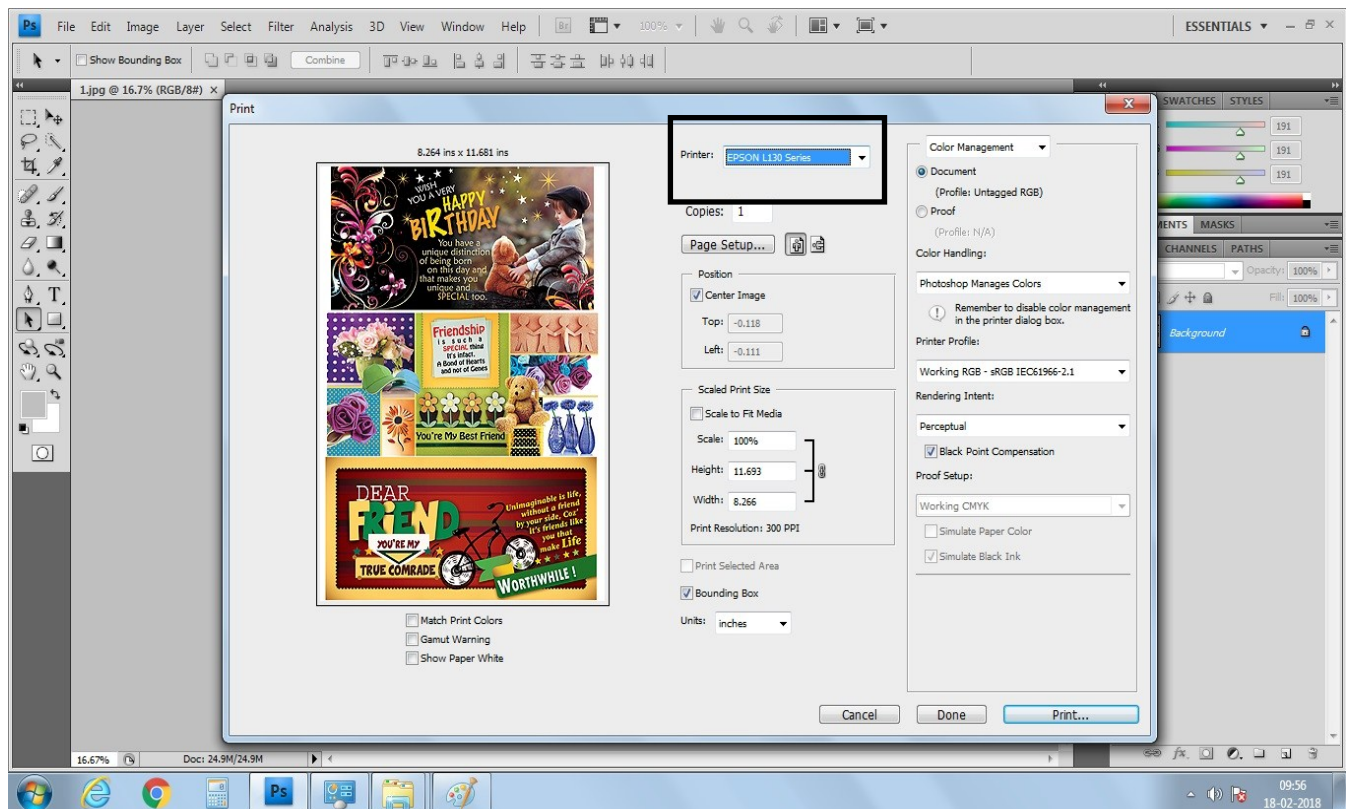


Fig. 6

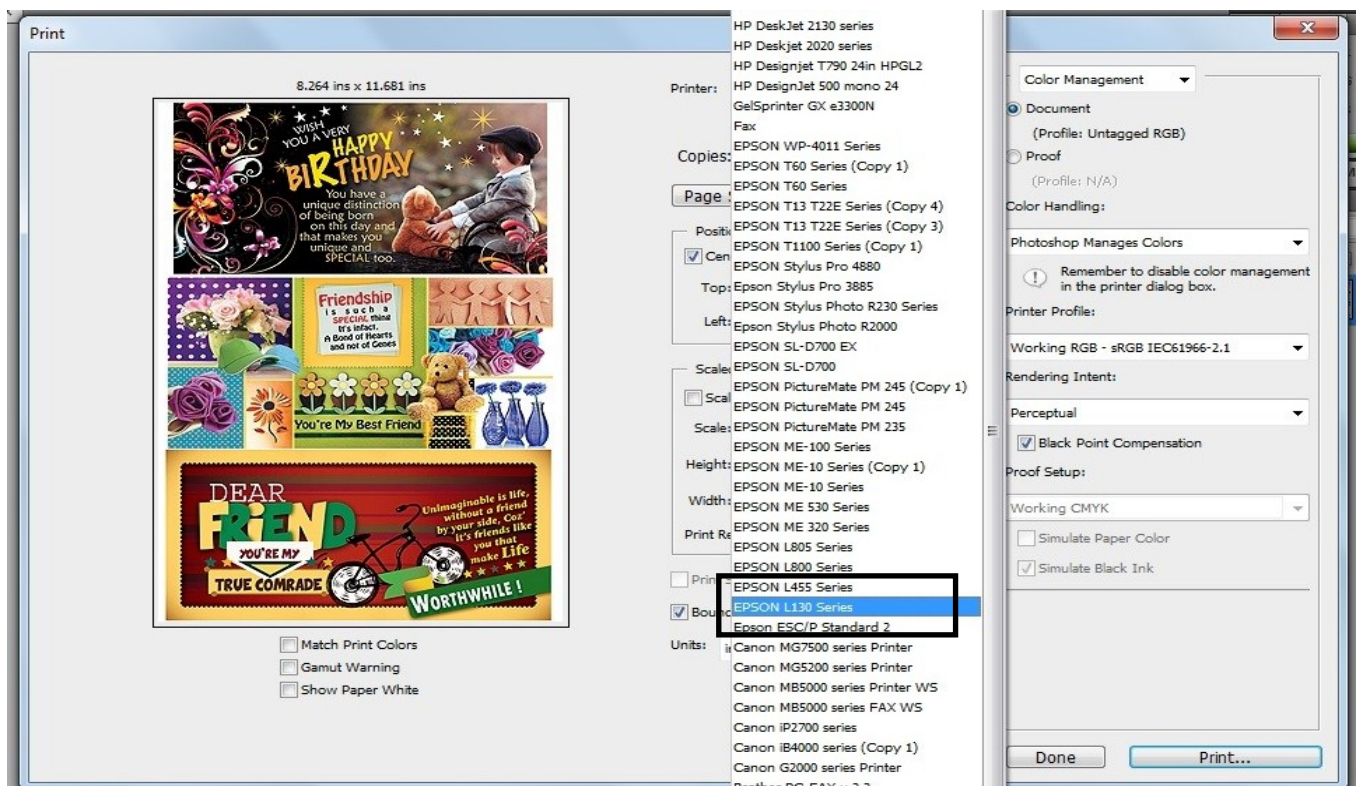


Fig. 7

- Step 7:** a) Go to Color Management : Document: Profile: - Untagged RGB
b) Color Handling: Select “Photoshop Manages colors”
as shown in fig. 8

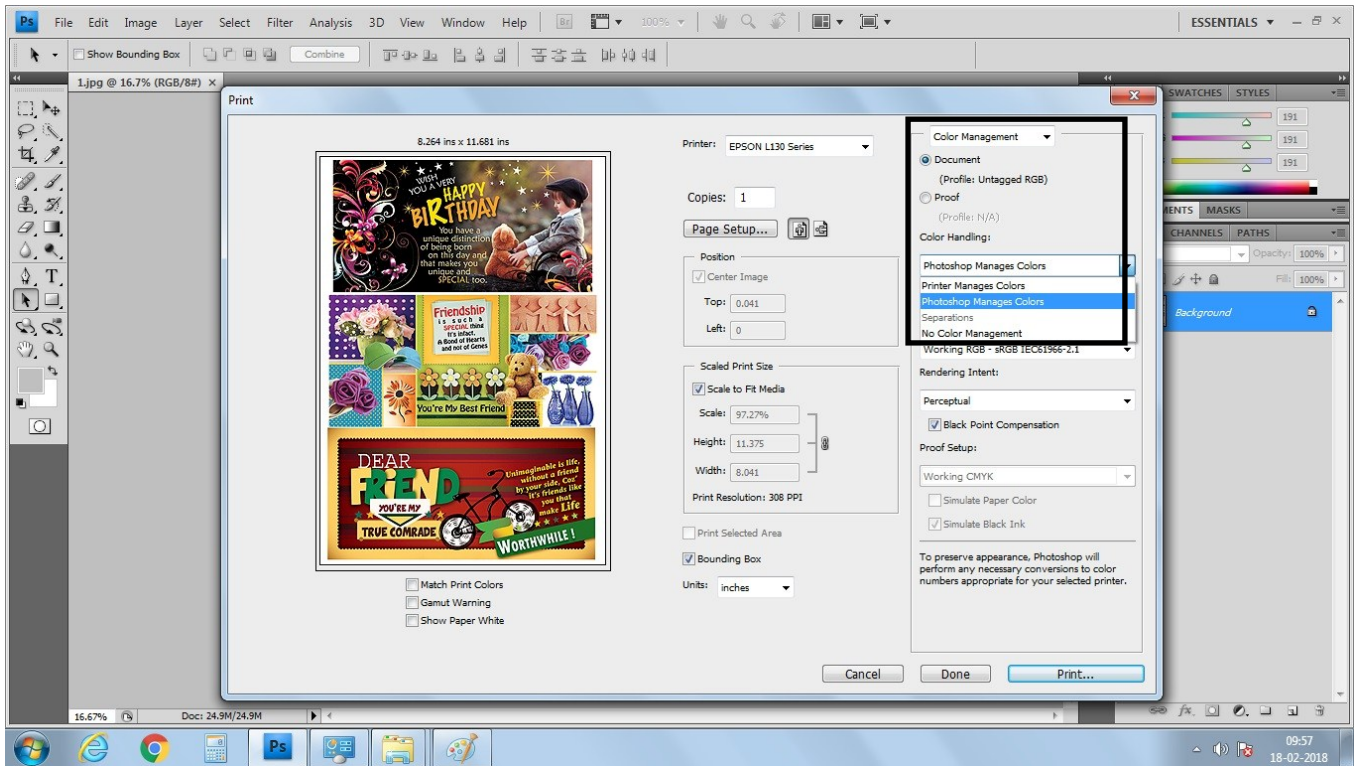


Fig. 8

- Step 8:** Go to “Printer Profile” drop down box as shown in fig.9

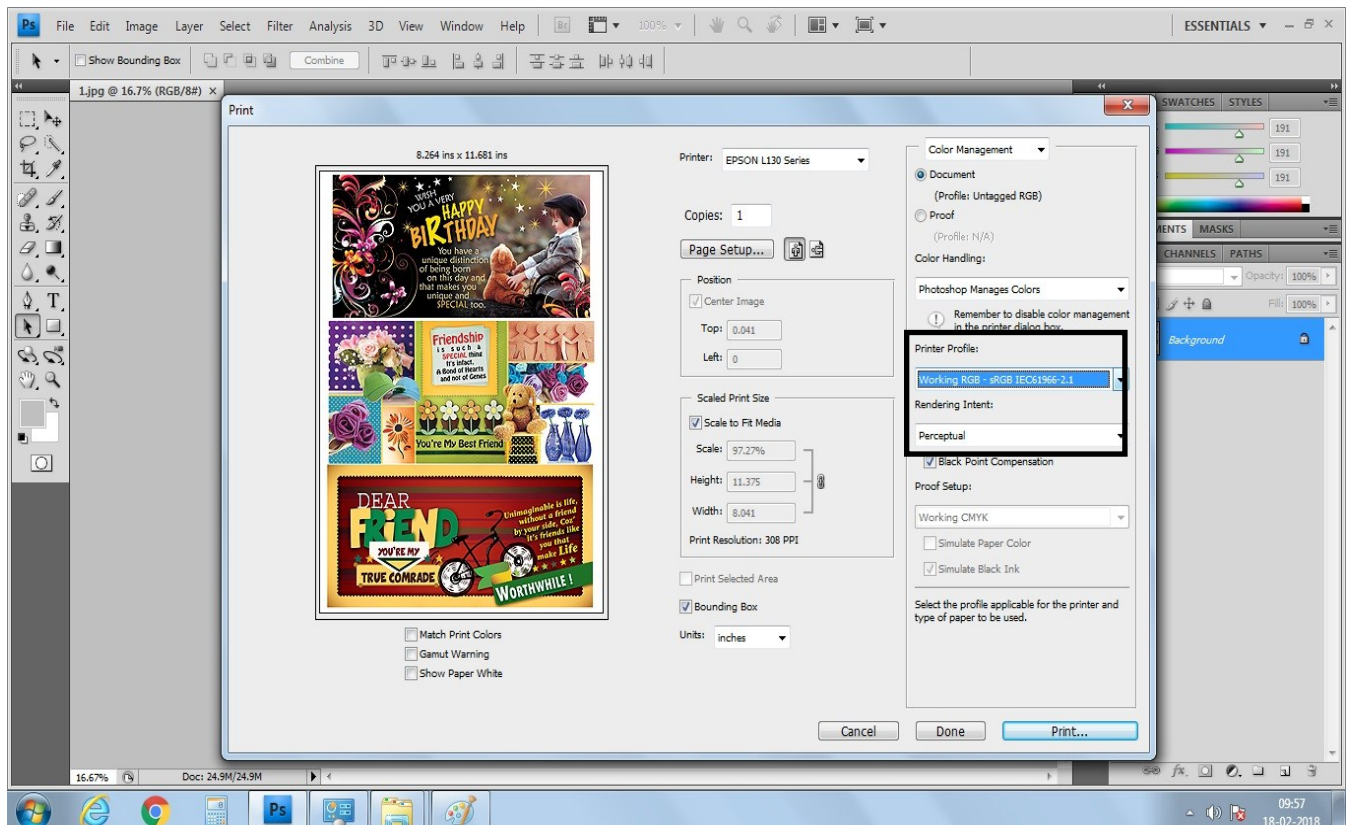


Fig. 9

Step 9: Select printer profile name as “Epson_L130_Suq_V800_R2” from drop down box as shown in fig.10

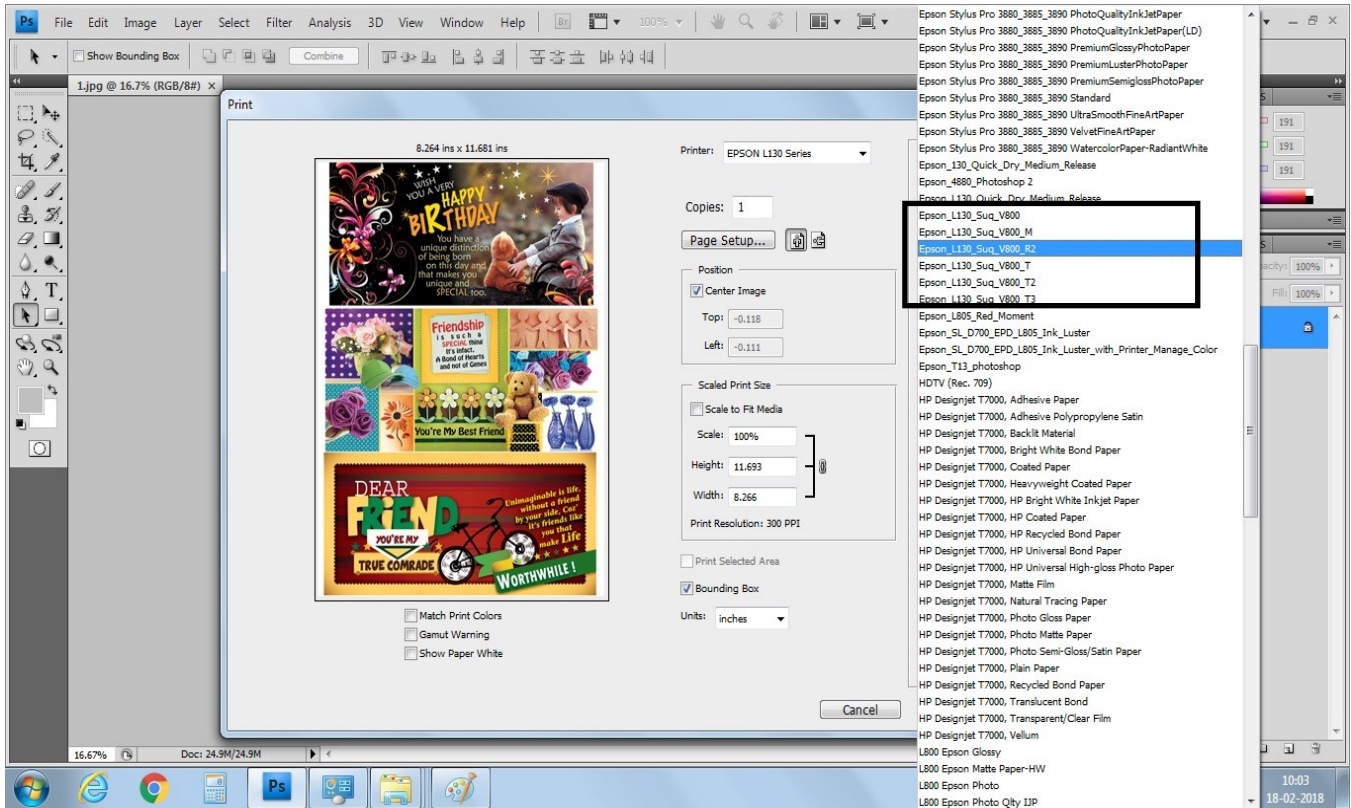


Fig. 10

Step 10: Select Rendering Intent “Perceptual” from drop down box as shown in fig.11

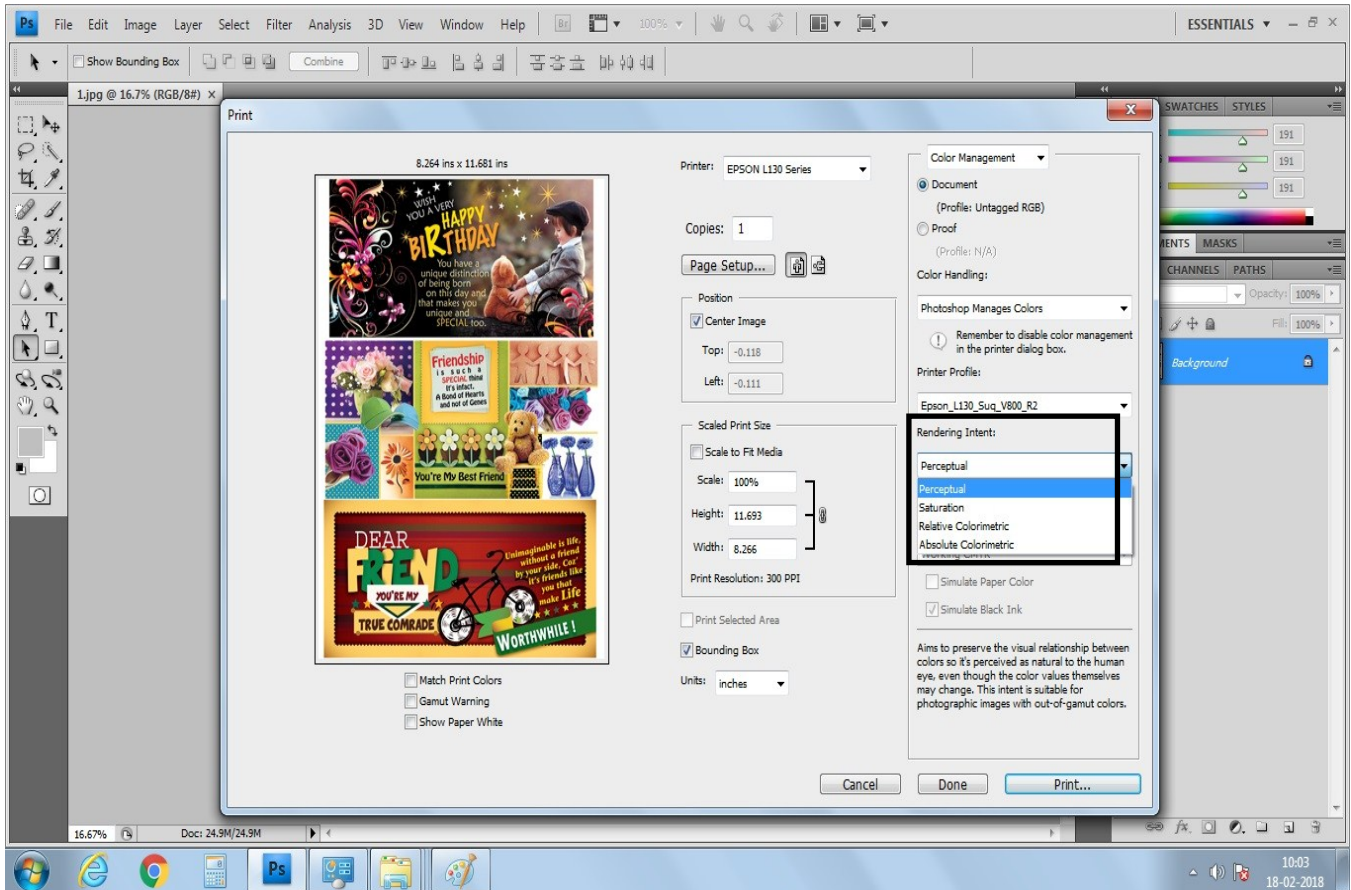


Fig. 11

Print Setting – Printer Driver :-

Step 11: Click on “Page Setup” tab as shown in fig.12

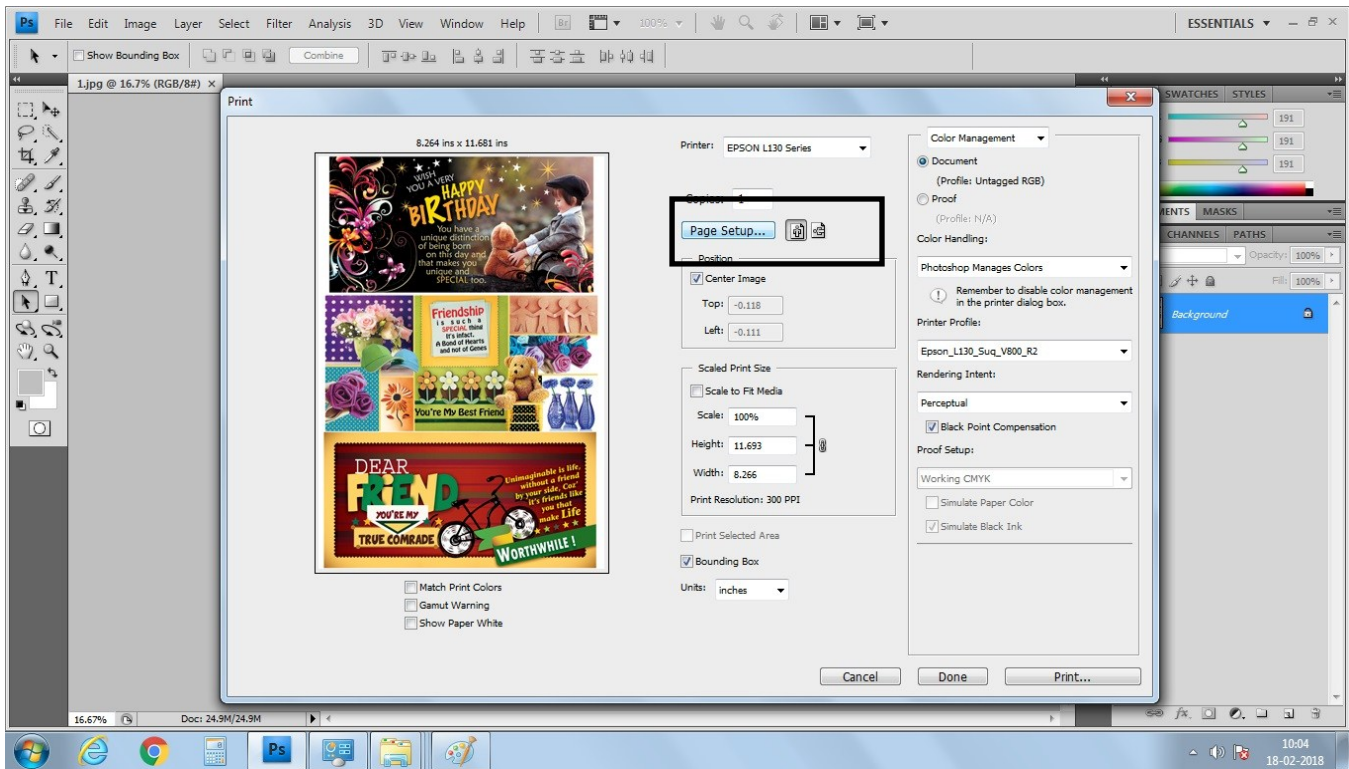


Fig. 12

Step 12: In Page Setup “Main” tab select

- Document Size - as your paper size to print.
- Orientation - Portrait or Landscape.
- Paper Type: Epson Matte.
- Quality: High.
- and Color button to be checked as shown in fig.13

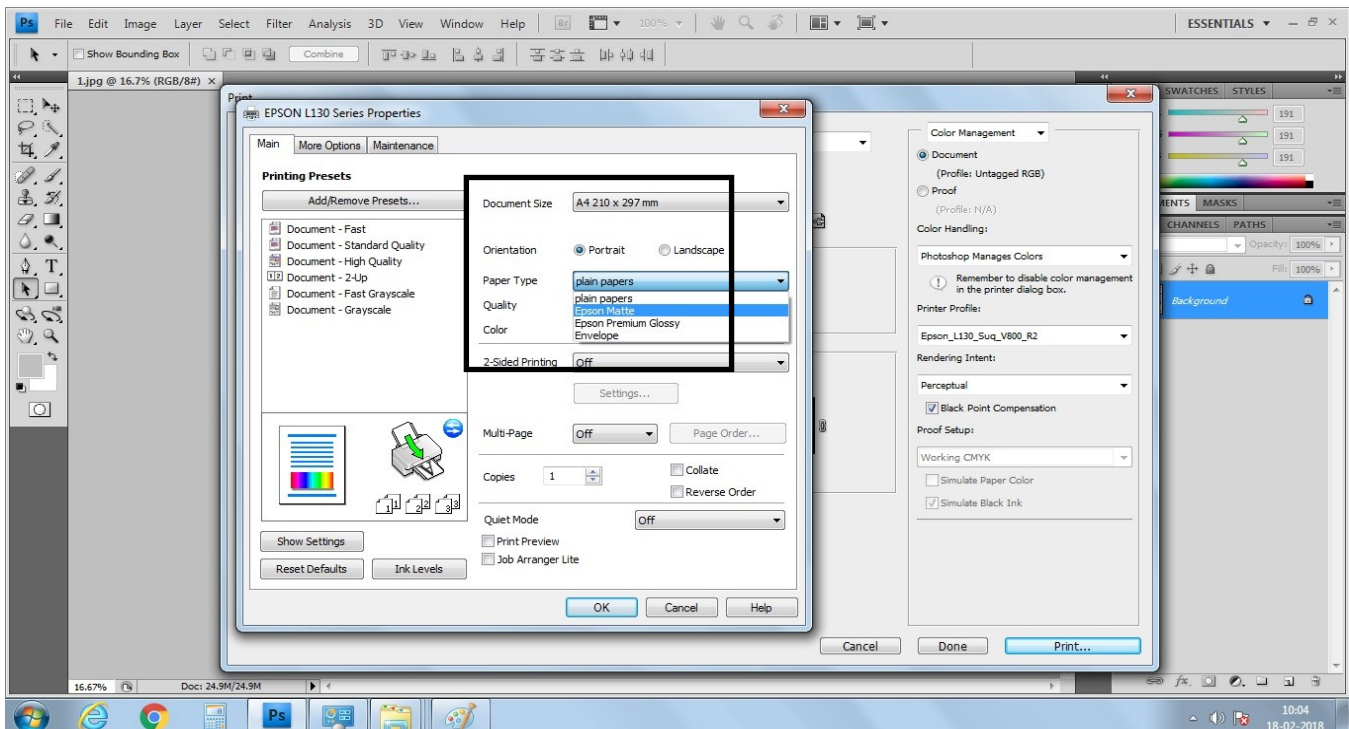


Fig. 13

Step 13: In More Options tab “Additional Settings”, “High Speed” check box should be “unchecked” and “Mirror Image” check box has to be “checked”
In same More Options tab select Custom and click on “Advanced” as shown in fig.14

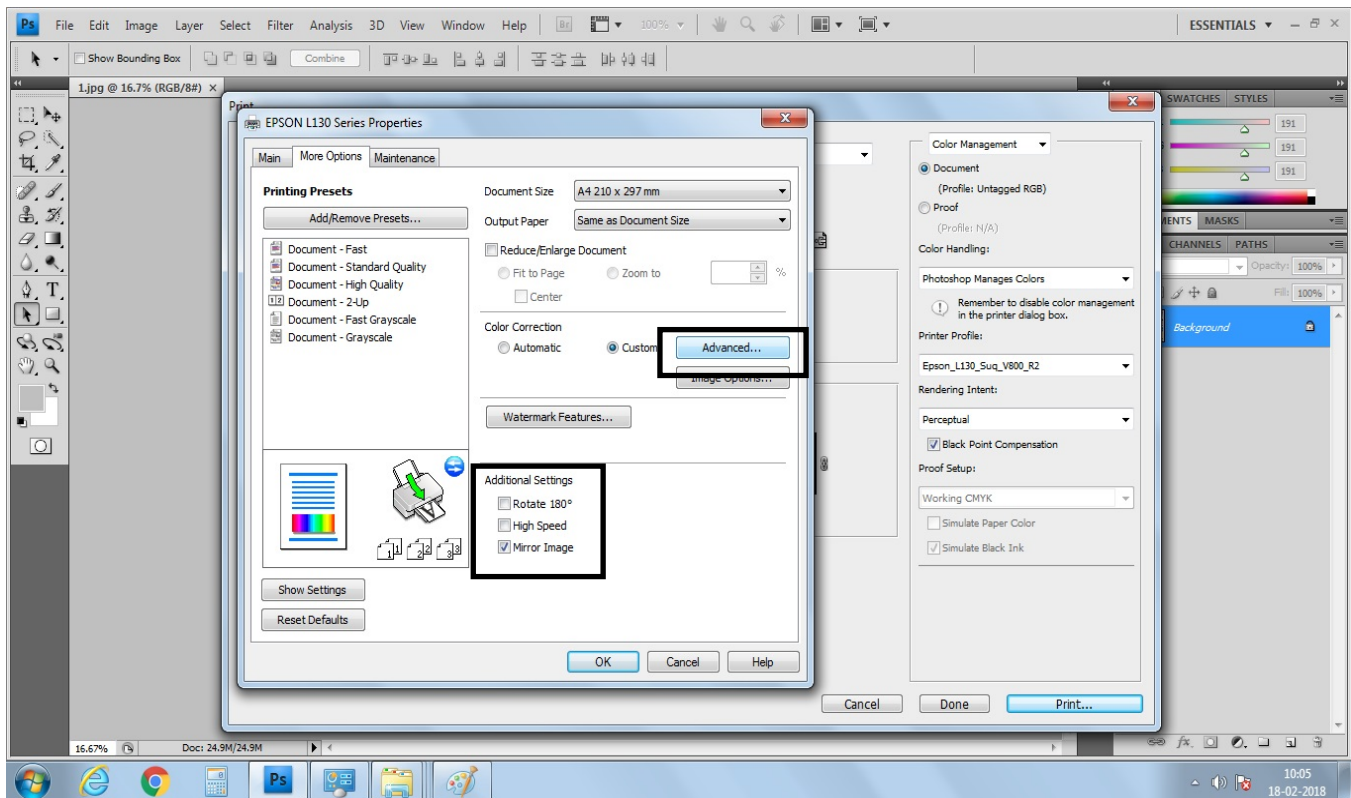


Fig. 14

Step 14: In “Advanced”, click on “No Color Adjustment” as shown in fig.15 and click on “OK”

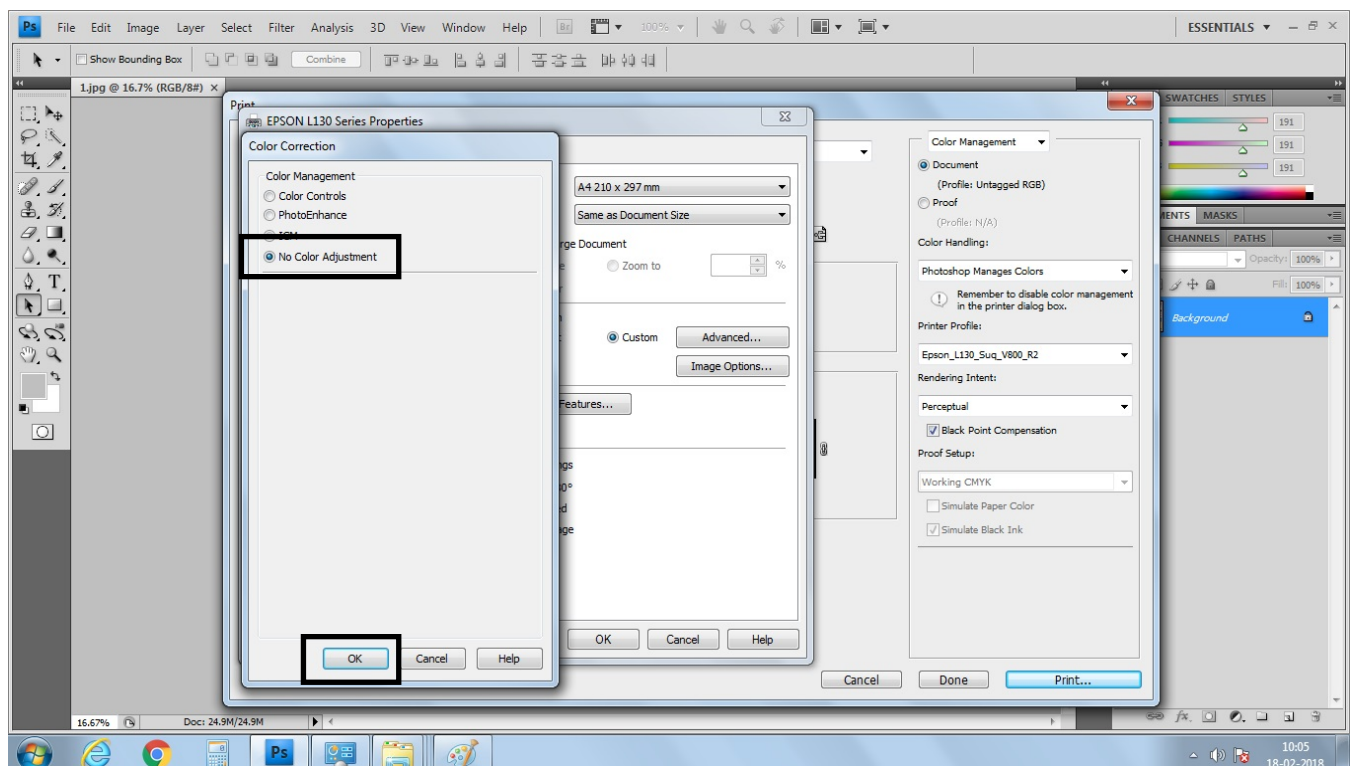


Fig. 15

Step 15: In “More Options” menu select “Image Options...”

In “Image Options” menu select the checkbox for “Edge Smoothing,” as shown in fig. 16 and click on “OK”

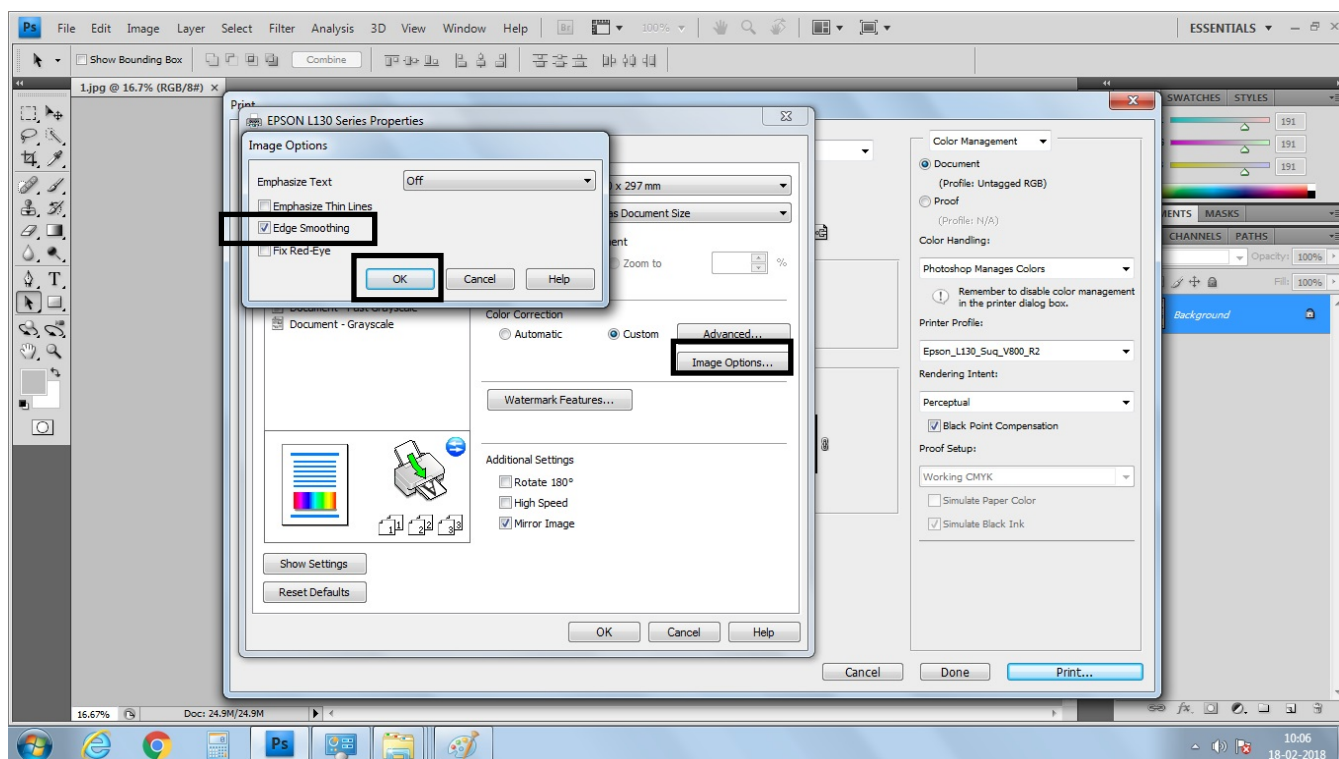


Fig. 16

Step 16: Finally click on “Print” option as shown in fig. 17

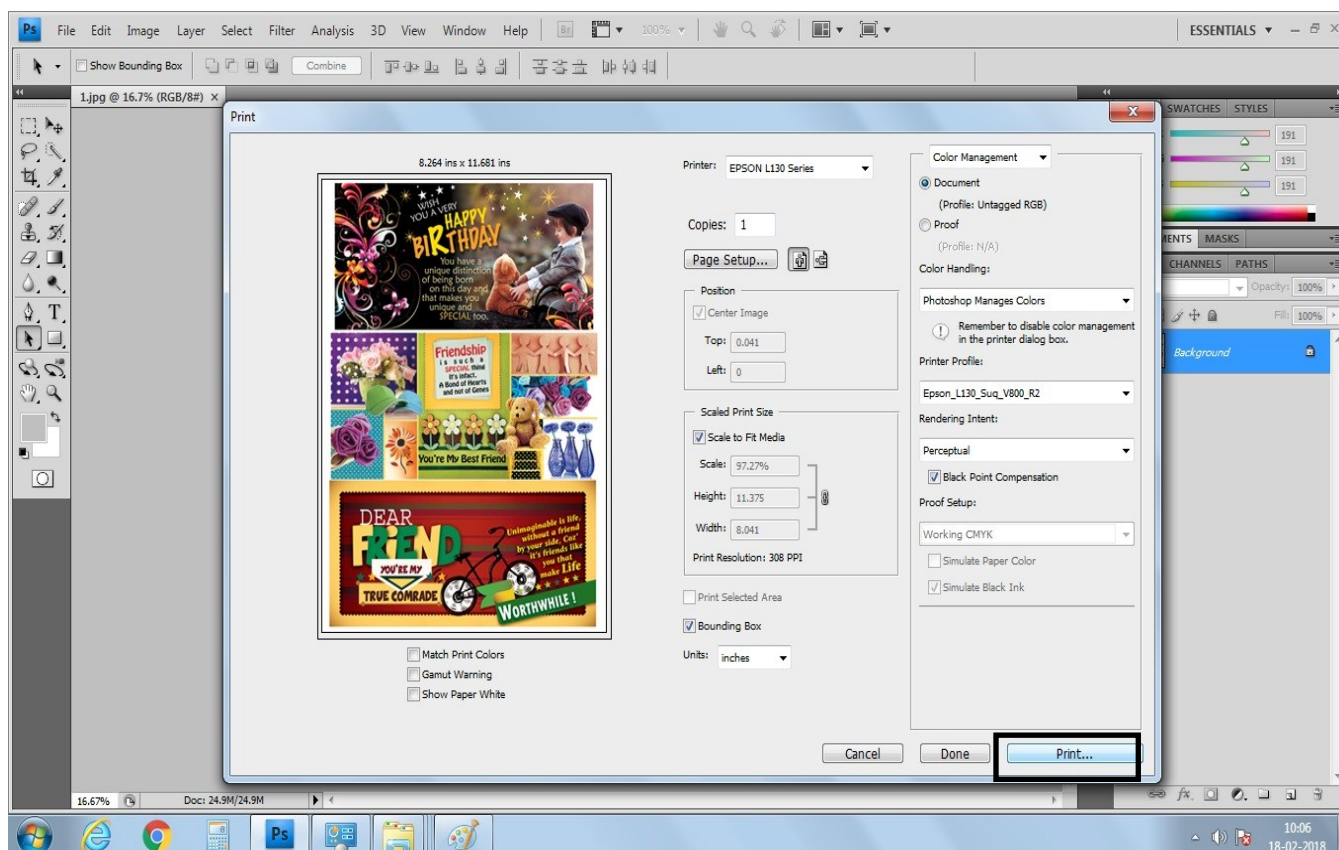


Fig. 17